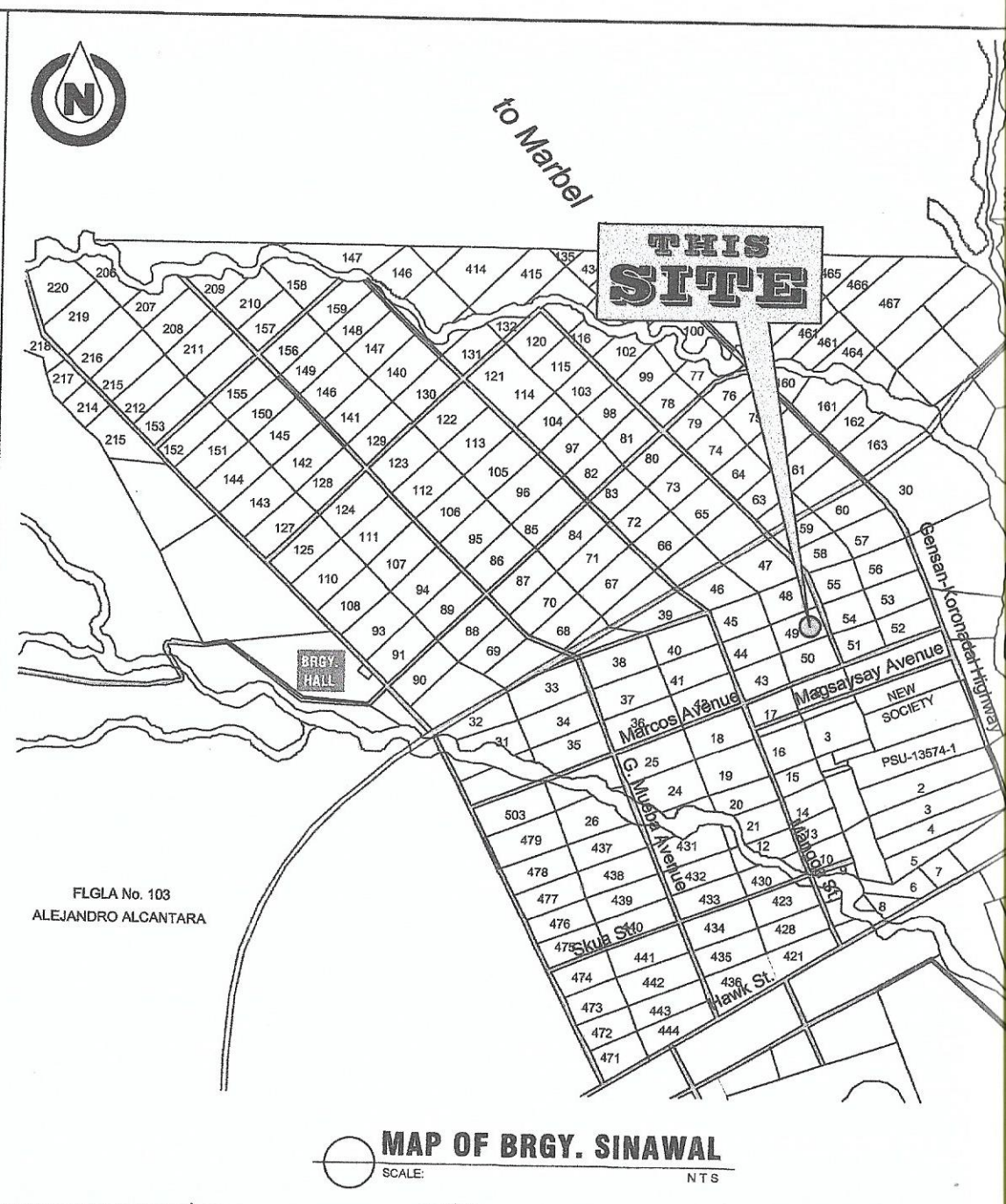


**MAP OF GENERAL SANTOS CITY**

SCALE: N T S



**MAP OF BRGY. SINAWAL**

SCALE: N T S

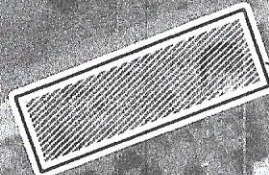
FLGLA No. 103  
ALEJANDRO ALCANTARA

**GENERAL SANTOS CITY WATER DISTRICT**  
E. FERNANDEZ STREET, BRGY. LAGAO, GEN. SANTOS CITY  
ENGINEERING & CONSTRUCTION DEPARTMENT  
PLANNING AND DESIGN DIVISION  
TEL. NO.: (083) 552 - 3824

PROJECT TITLE / LOCATION: <b>PROPOSED EXPLORATORY / DRILLING OF PRODUCTION WELL</b>	CHECKED BY:  <b>ENGR. MARIA CELIA N. DANDAN</b> OIC - Planning & Design Division	REVIEWED BY:  <b>ENGR. ROGELIO A. BESANA, JR.</b> AGM - Operations & Technical Services	APPROVED BY:  <b>ENGR. ARN B. GELLANGARIN</b> General Manager	CONTENT: <b>AS SHOWN</b>	SHEET NO.:
RESERVOIR SITE, BRGY. SINAWAL, GSC				DRAWN: ESA REVISION:	
				CHECKED: DMH DATE: 02 / 23 / 2022	



Gemma



**THIS  
SITE**

LATITUDE: 6° 08' 13.99" N  
LONGITUDE: 125° 07' 54.03" E

Brava Engineering Works

Litan 2 BKK/ Sta. Cruz

Artificial Surfing Hub

New Society National High School

Marcos Ave

Marcos Ave

Angels Cellphone And Accessories Cellphone store

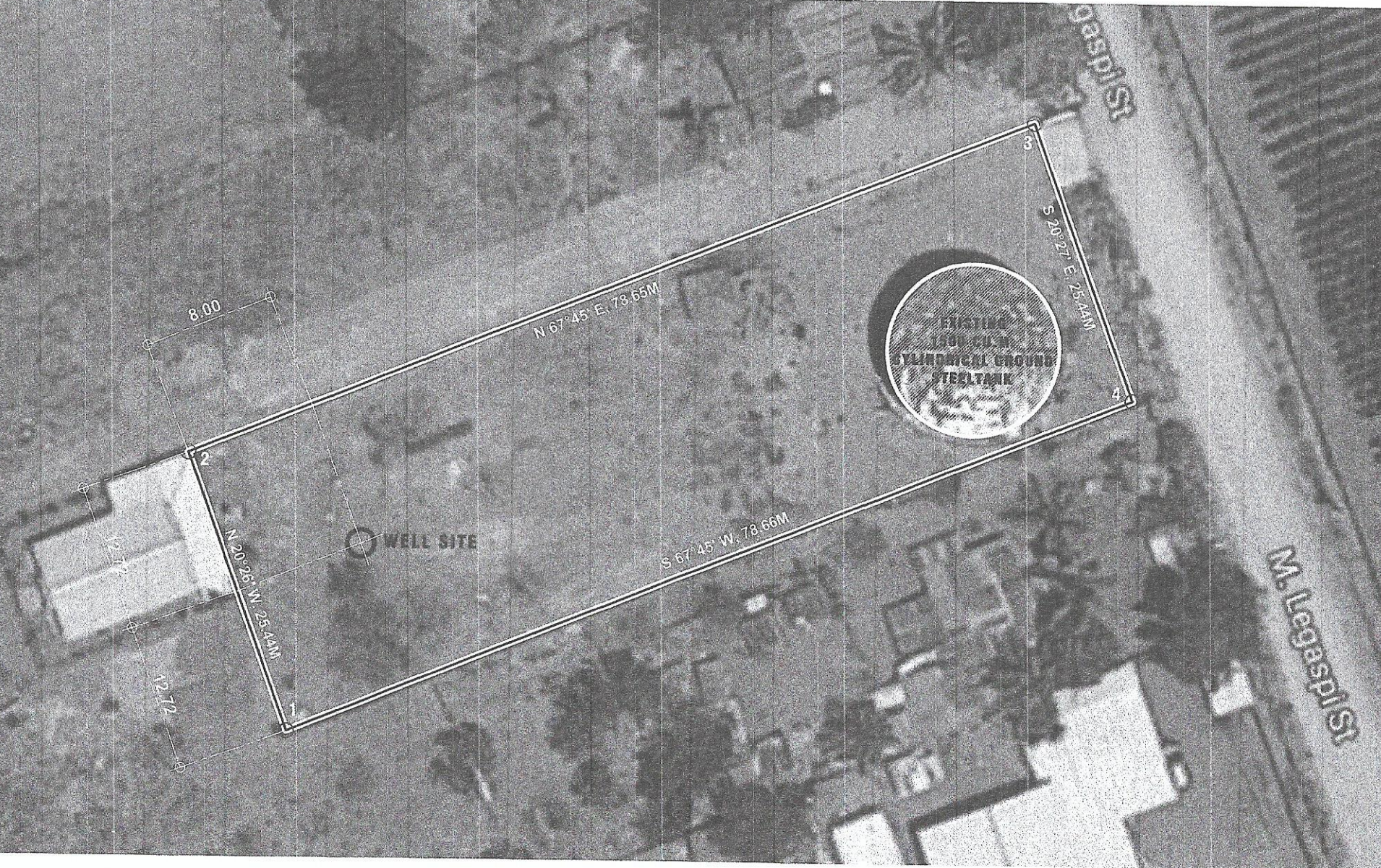
Princeton Express Inn

Cris Meat

**LOCATION PLAN**  
SCALE: NTS

**GENERAL SANTOS CITY WATER DISTRICT**  
E. FERNANDEZ STREET, BRGY. LAGAO, GEN. SANTOS CITY  
ENGINEERING & CONSTRUCTION DEPARTMENT  
PLANNING AND DESIGN DIVISION  
TEL. NO.: (083) 552 - 3824

PROJECT TITLE / LOCATION:	CHECKED BY:	REVIEWED BY:	APPROVED BY:	CONTENT:	SHEET
<b>PROPOSED EXPLORATORY / DRILLING OF PRODUCTION WELL</b>  RESERVOIR SITE, BRGY. SINAWAL, GSC	 ENGR. MARIA CELIA N. DANDAN DIC - Planning & Design Division	 ENGR. ROGELIO A. BESANA, JR. AGM - Operations & Technical Services	 ENGR. ARN B. GELLANGARIN General Manager	<b>AS SHOWN</b>	
				DRAWN: ESA CHECKED: DMH	REVISION: DATE: 02 / 23 / 2022




**SITE DEVELOPMENT PLAN**  
 SCALE: NTS

<b>GENERAL SANTOS CITY WATER DISTRICT</b> E. FERNANDEZ STREET, BRGY. LAGAO, GEN. SANTOS CITY ENGINEERING & CONSTRUCTION DEPARTMENT PLANNING AND DESIGN DIVISION TEL. NO.: (083) 552 - 3824	PROJECT TITLE / LOCATION:	CHECKED BY:	REVIEWED BY:	APPROVED BY:	CONTENT:	SHEET NO.	
	<b>PROPOSED EXPLORATORY / DRILLING OF PRODUCTION WELL</b>  RESERVOIR SITE, BRGY. SINAWAL, GSC	ENGR. MARIA CELIA N. DANDAN <small>OC - Planning &amp; Design Division</small>	ENGR. ROGELIO A. BESANA, JR. <small>AGM - Operations &amp; Technical Services</small>	ENGR. ARN B. GELLANGARIN <small>General Manager</small>	<b>AS SHOWN</b>	DRAWN: ESA REVISION:	
					CHECKED: DMH DATE: 02 / 23 / 2022		