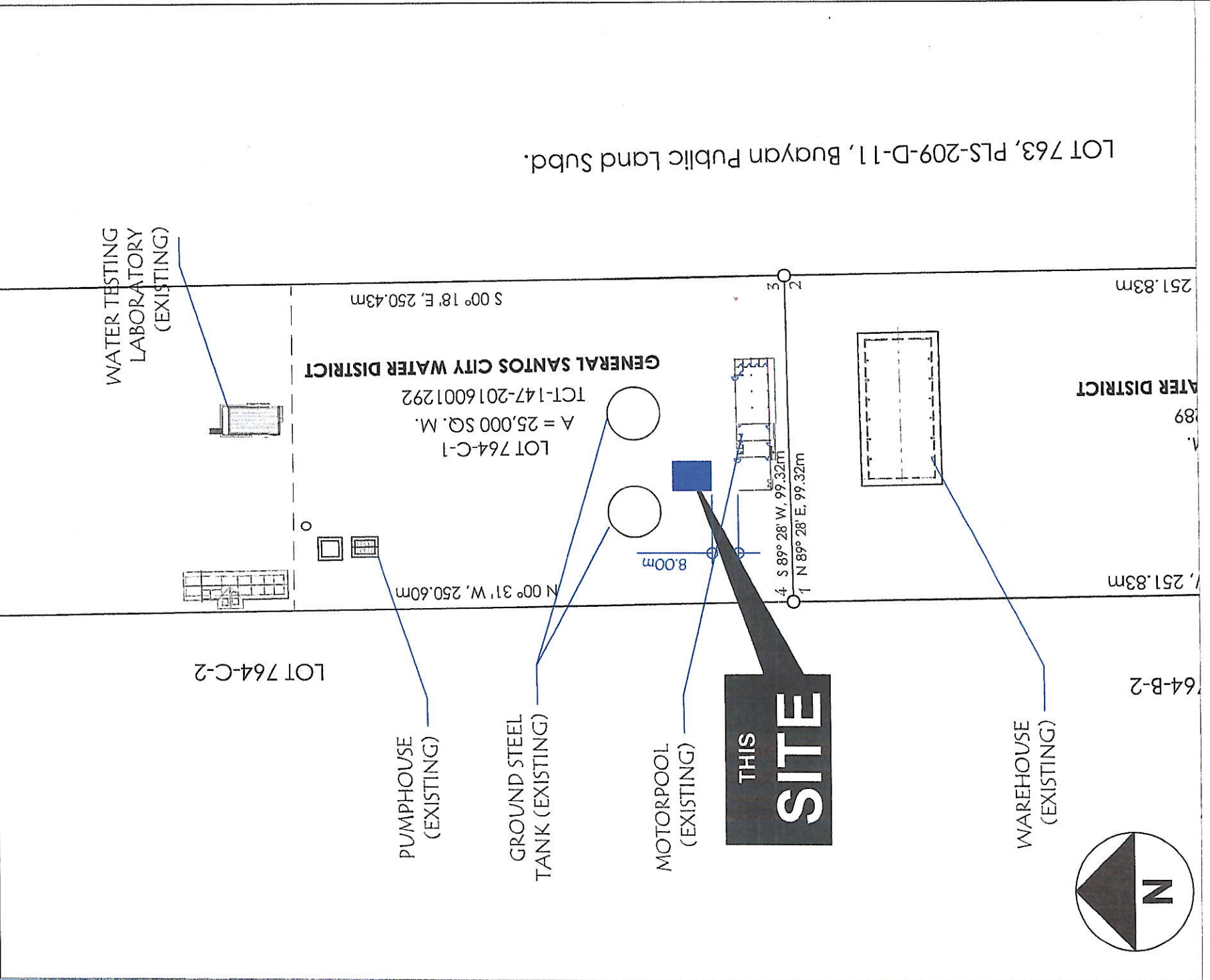




PERSPECTIVE
SCALE: DRAWN NOT TO SCALE

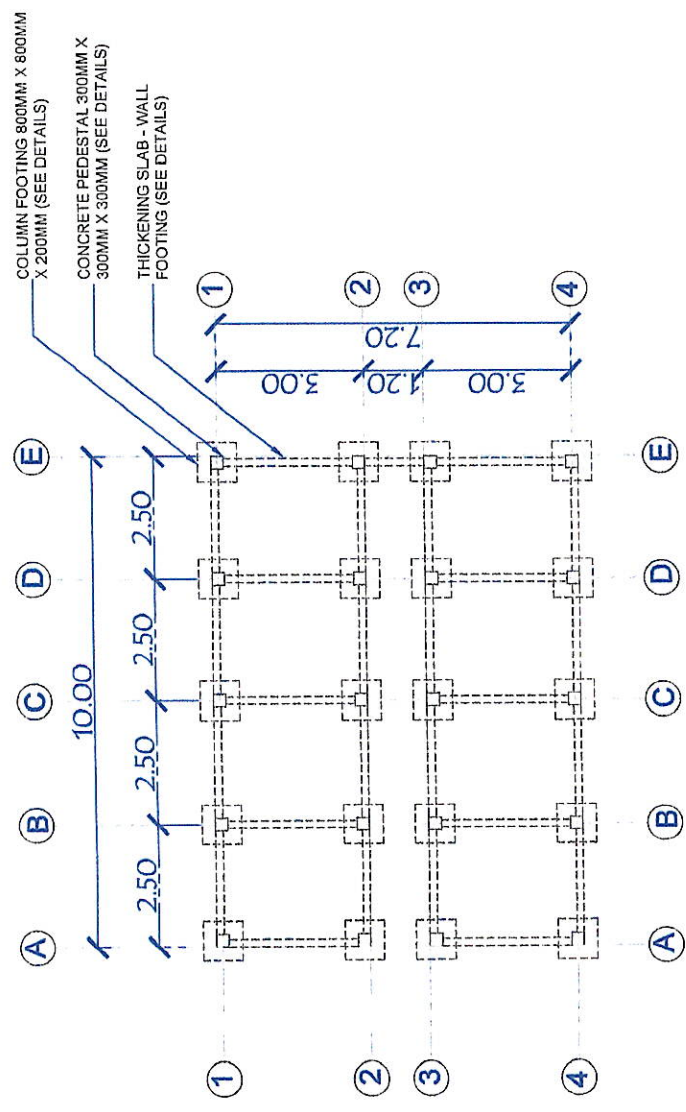


VICINITY MAP
SCALE: DRAWN NOT TO SCALE

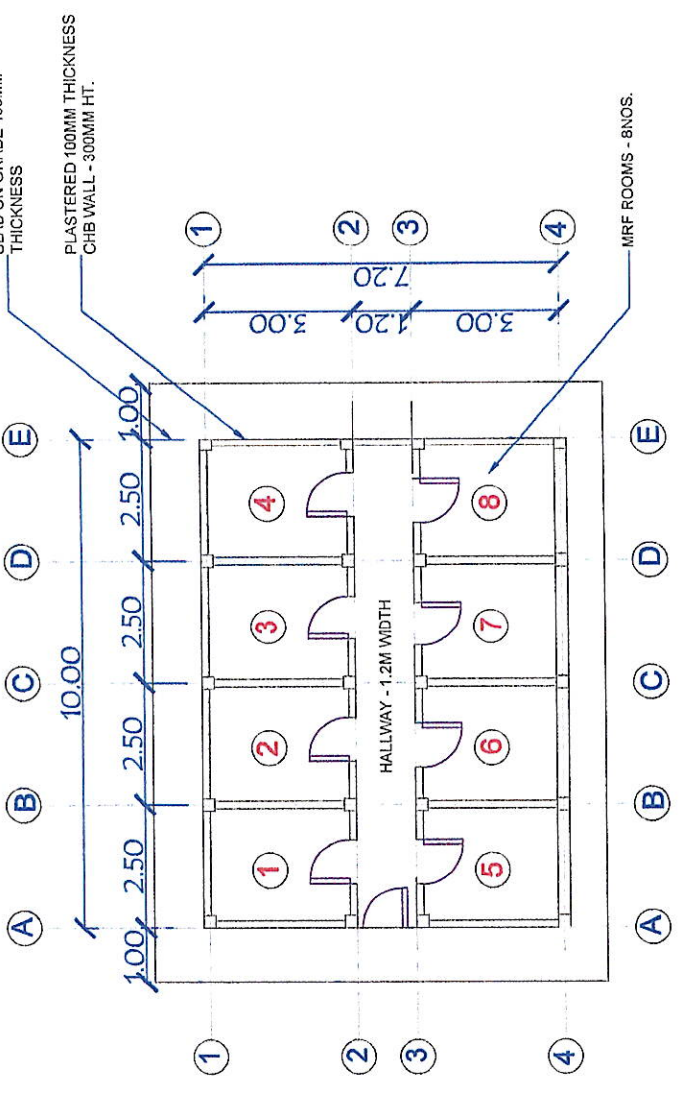


SITE DEVELOPMENT PLAN
SCALE 1:1500

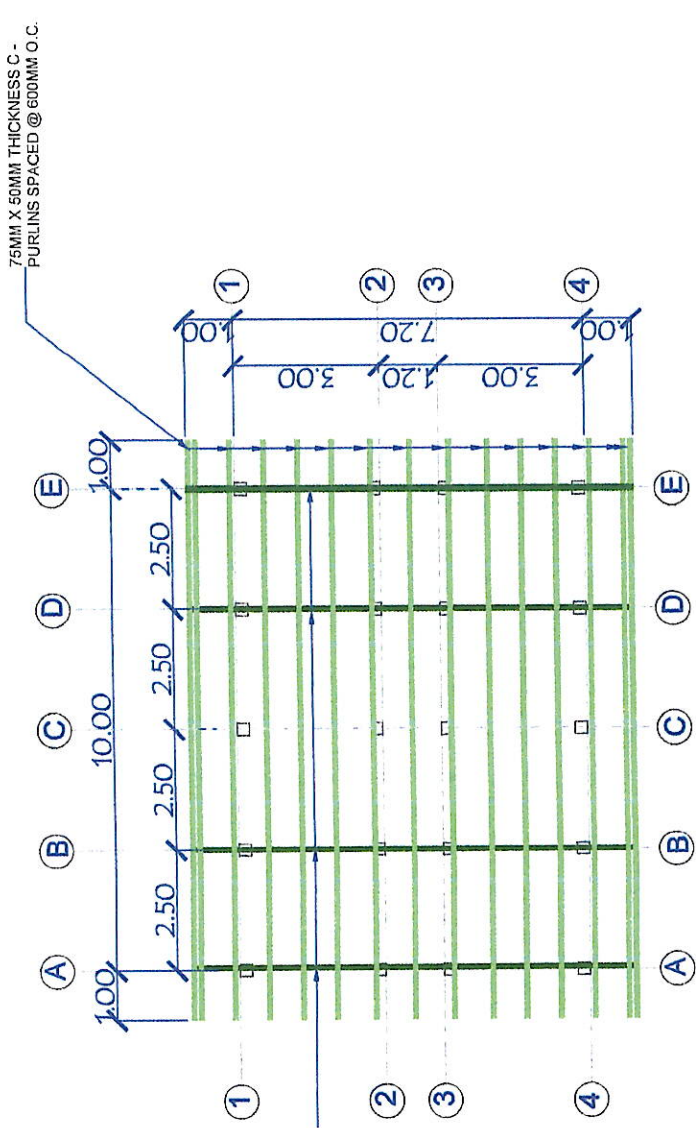
LOT 763, PLS-209-D-11, Buayan Public Land Subd.



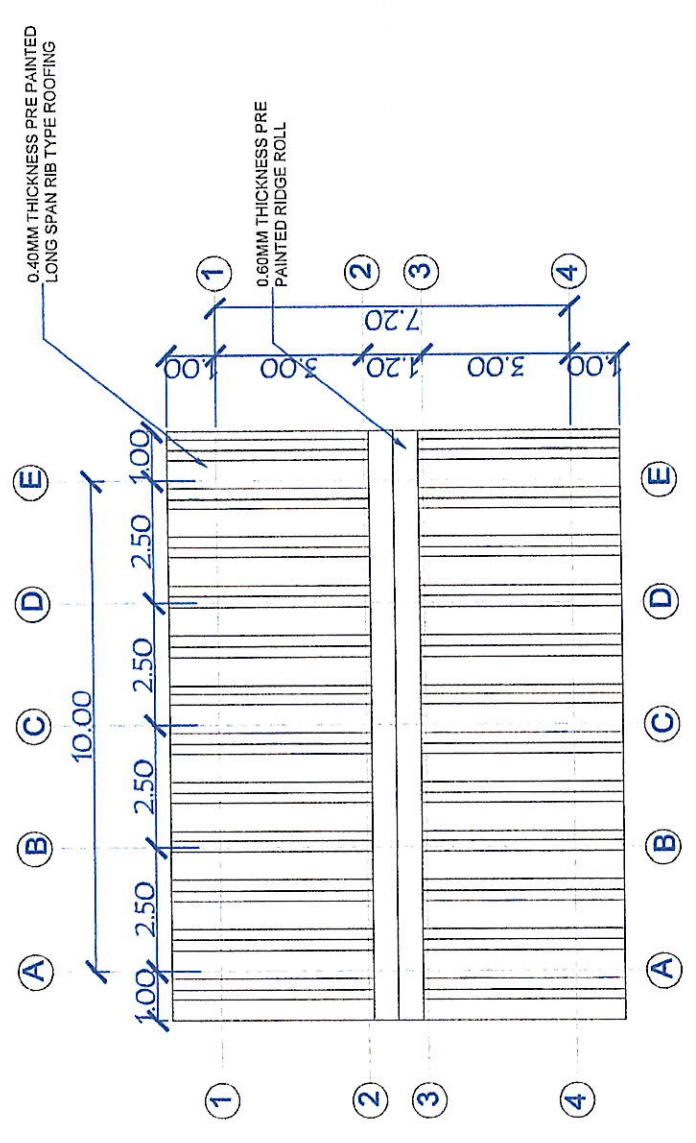
FOUNDATION PLAN
SCALE: 1/150



FLOOR PLAN
SCALE: 1/150



ROOF FRAMING PLAN
SCALE: 1/150



ROOF PLAN
SCALE: 1/150

GENERAL SANTOS CITY WATER DISTRICT
E. FERNANDEZ STREET, BRGY. LAGAO, GEN. SANTOS CITY
ENGINEERING & CONSTRUCTION DEPARTMENT
PLANNING AND DESIGN DIVISION
TEL. NO.: (083) 552-3824

PROJECT TITLE:
CONSTRUCTION OF MATERIALS RECOVERY FACILITY, PS NO. 16

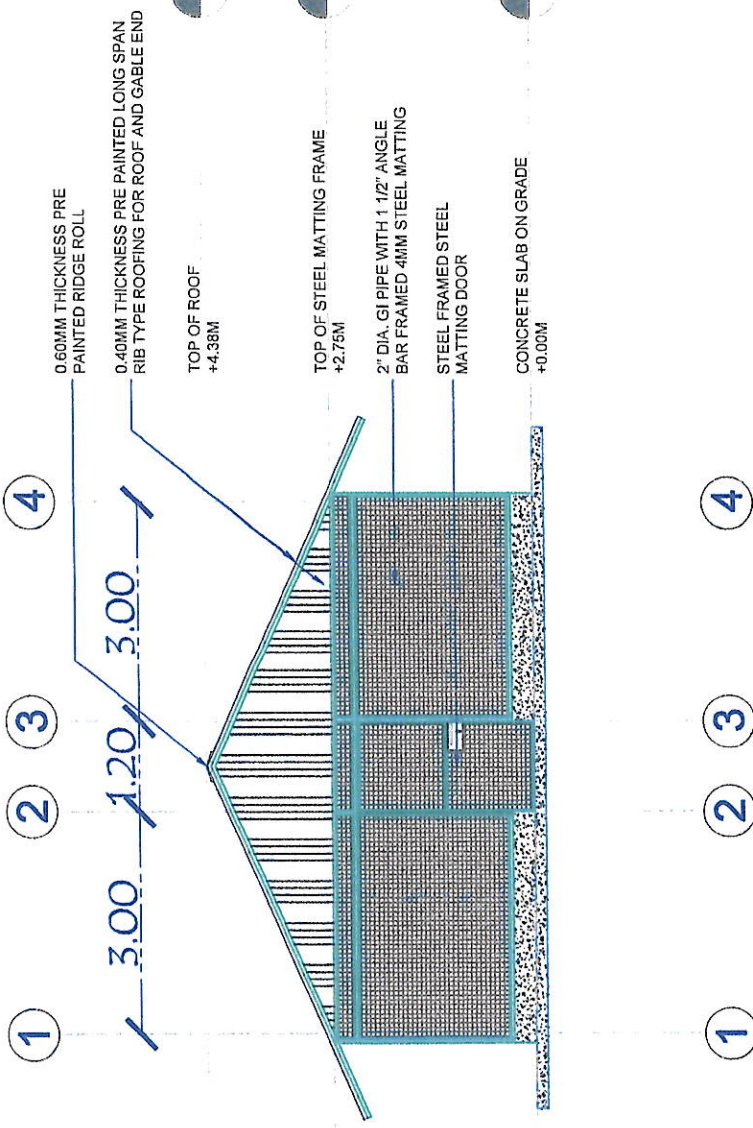
CHECKED BY: *[Signature]*
ENGR. DAMILOM HORLADOR, JR.
PDD - PROJECT PLANNING AND DEVELOPMENT OFFICER A

REVIEWED BY: *[Signature]*
ENGR. MARIA CELIA N. DANDAN
PDS - OFFICER IN CHARGE

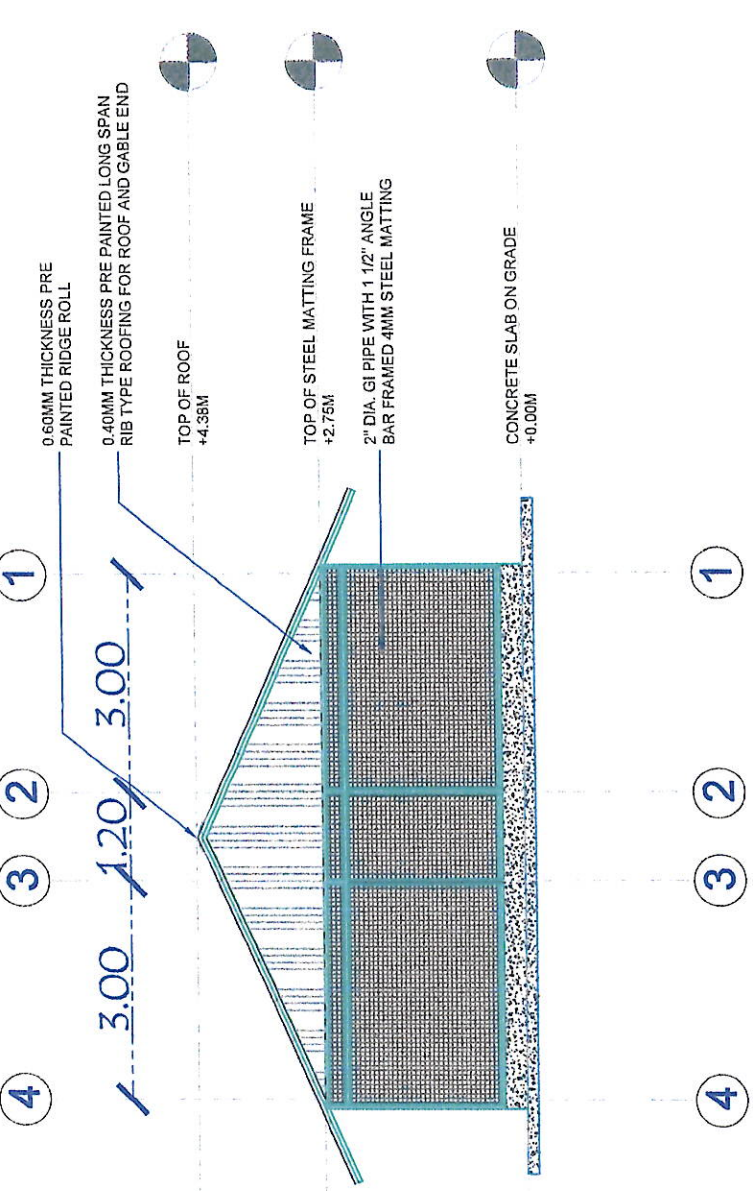
APPROVED BY: *[Signature]*
ENGR. ROGELIO A. BESANA, JR.
AGM - OPERATIONS AND TECHNICAL SERVICES

SHEET CONTENTS:
AS SHOWN
SHEET NO.: 02
DATE: OCTOBER 7, 2022
REV. NO. 02
DRAWN BY: JMD

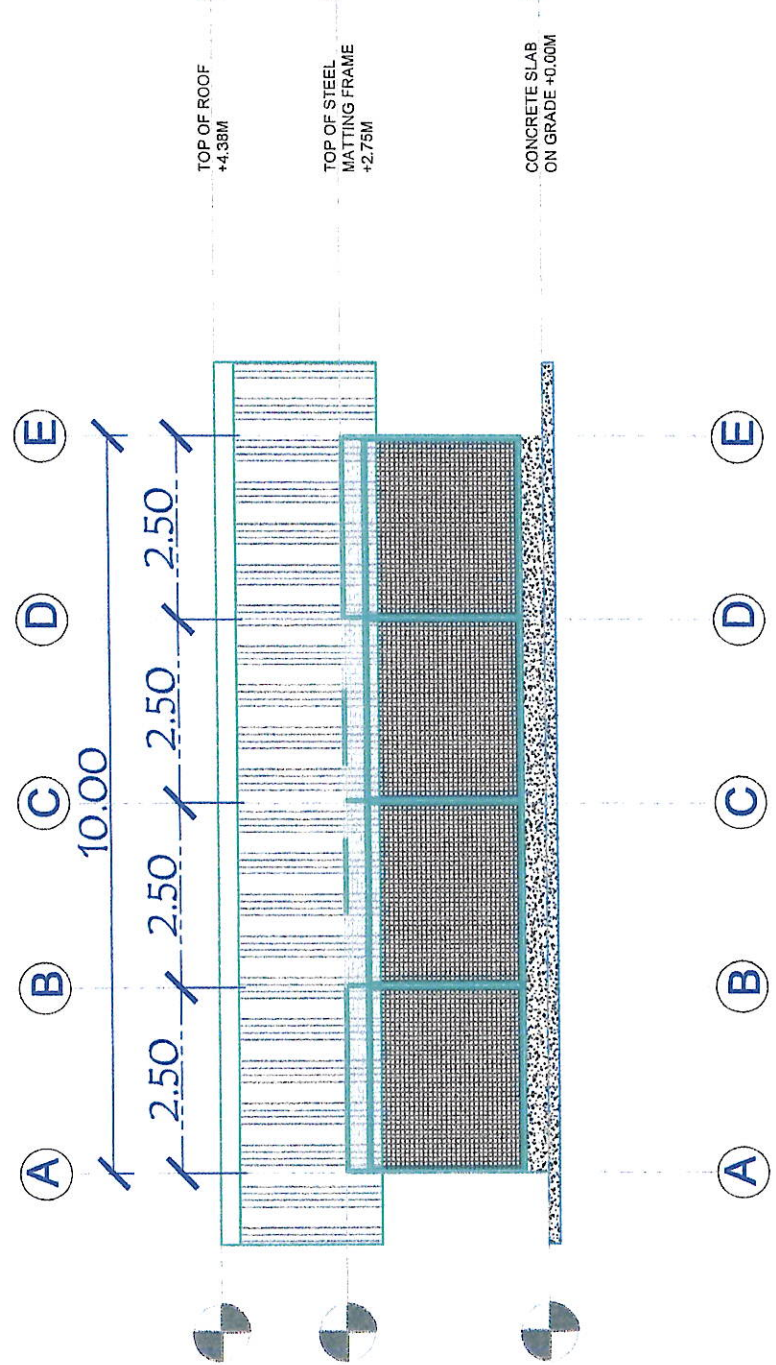




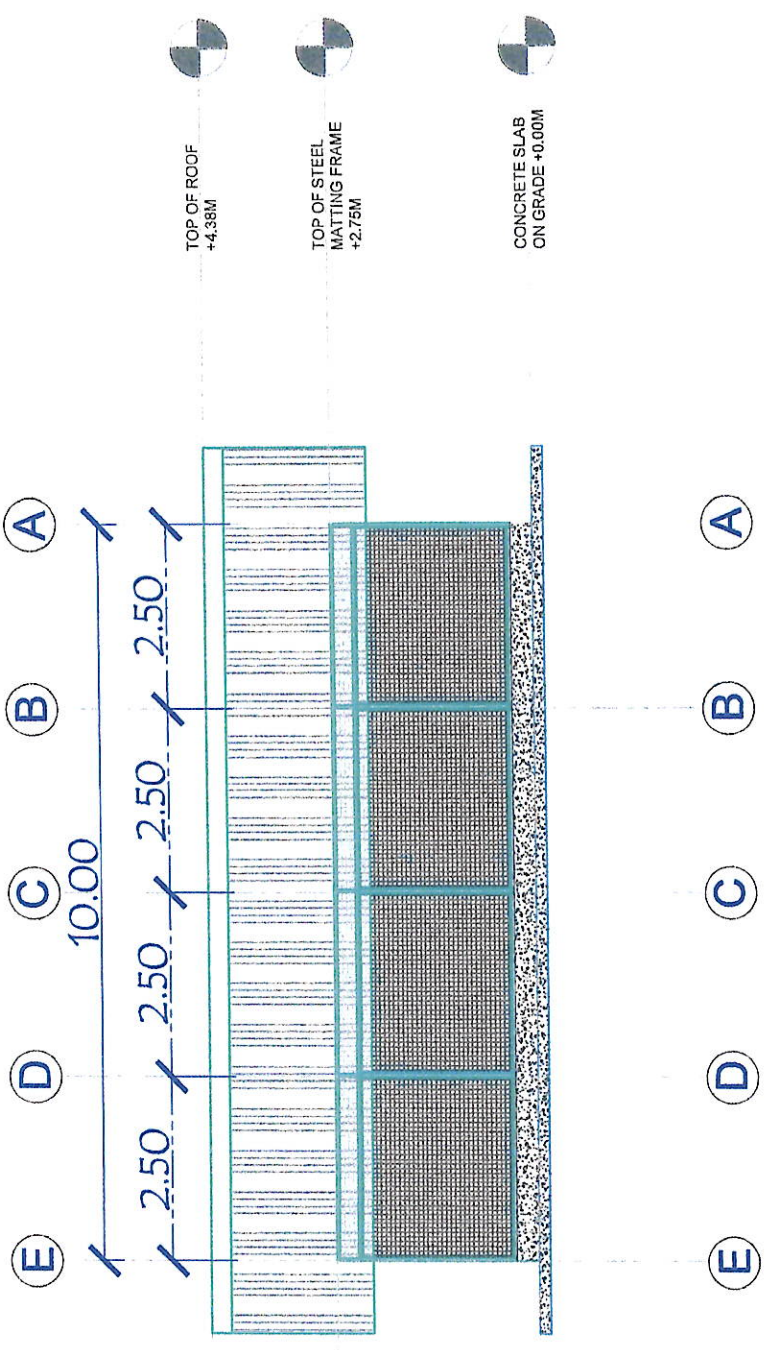
FRONT ELEVATION
SCALE: 1/100



REAR ELEVATION
SCALE: 1/100



RIGHT SIDE ELEVATION
SCALE: 1/100



LEFT SIDE ELEVATION
SCALE: 1/100

GENERAL SANTOS CITY WATER DISTRICT
E. FERNANDEZ STREET, BRGY. LAGAO, GEN. SANTOS CITY
ENGINEERING & CONSTRUCTION DEPARTMENT
PLANNING AND DESIGN DIVISION
TEL. NO.: (083) 592-3924

PROJECT TITLE:
CONSTRUCTION OF MATERIALS RECOVERY FACILITY, PS NO. 16
LOCATION: PK. LDAGRE BGV, CONEL GENERAL SANTOS CITY

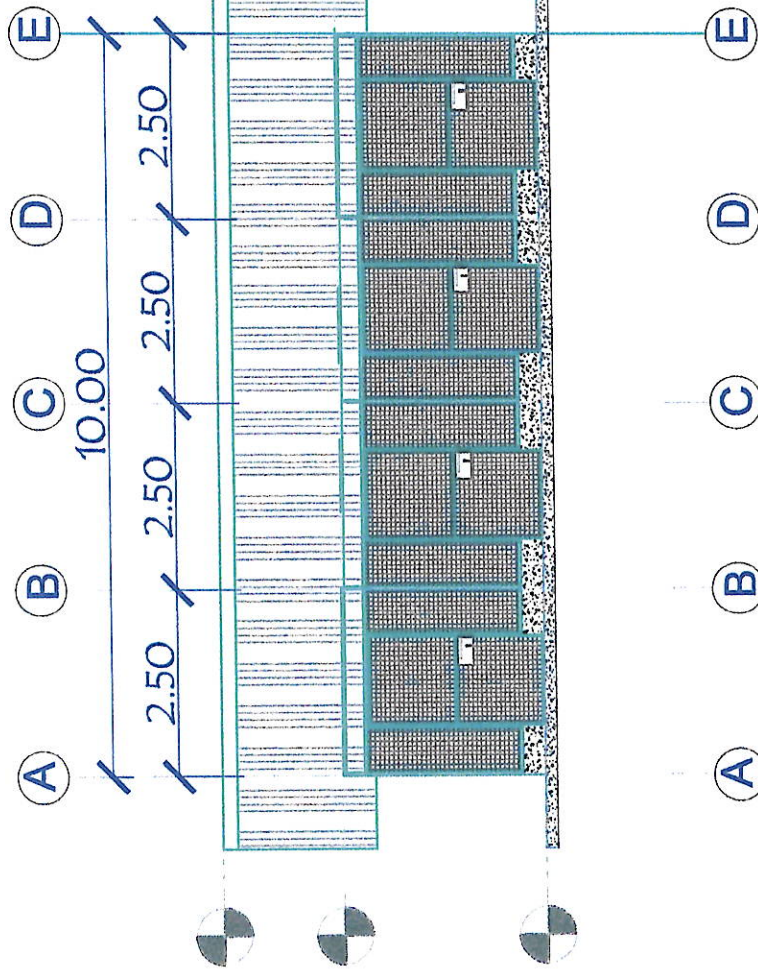
CHECKED BY: *[Signature]*
ENGR. DAVILO M. HORLADOR, JR.
PDD - PROJECT PLANNING AND DEVELOPMENT OFFICER A

REVIEWED BY: *[Signature]*
ENGR. MARIA CELIA N. DANDAN
PDD - OFFICER IN CHARGE

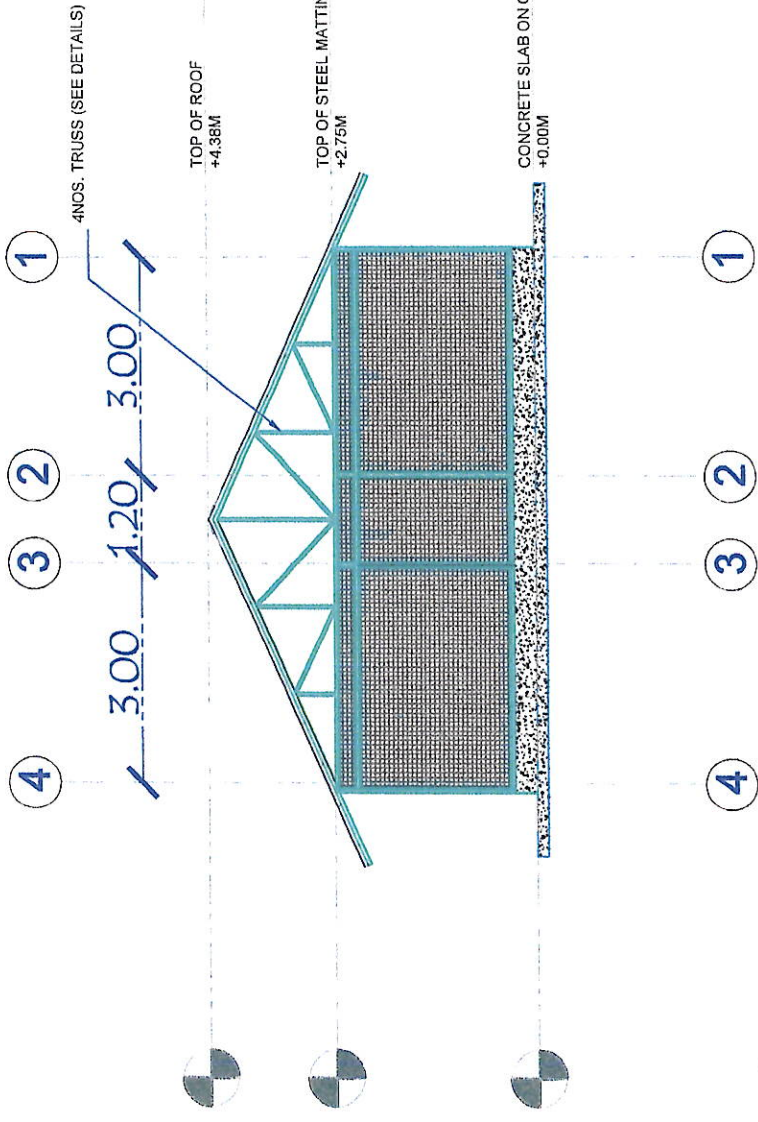
APPROVED BY: *[Signature]*
ENGR. ROGELIO A. BESANA, JR.
AGM - OPERATIONS AND TECHNICAL SERVICES

SHEET CONTENTS:
AS SHOWN
DRAWN BY: JKD
DATE: OCTOBER 7, 2022
REV. NO. 02

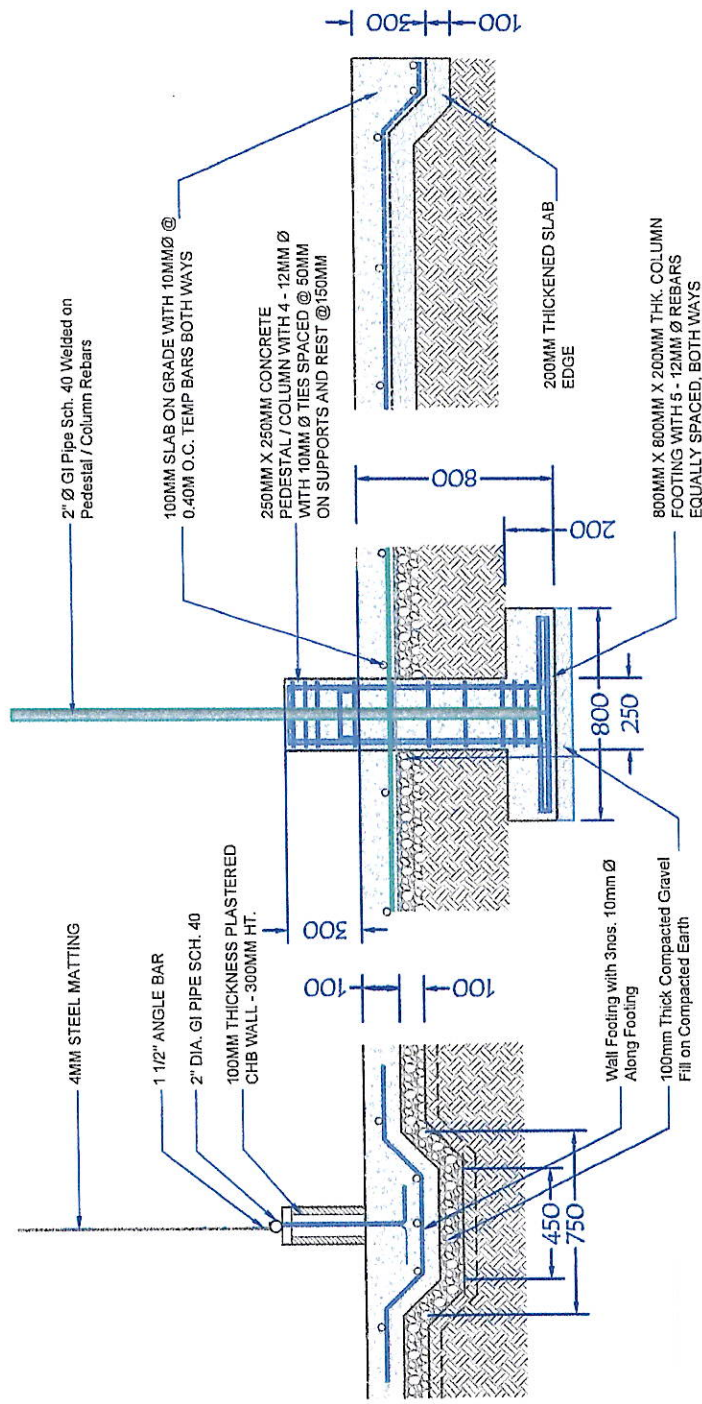
SHEET NO.: 03



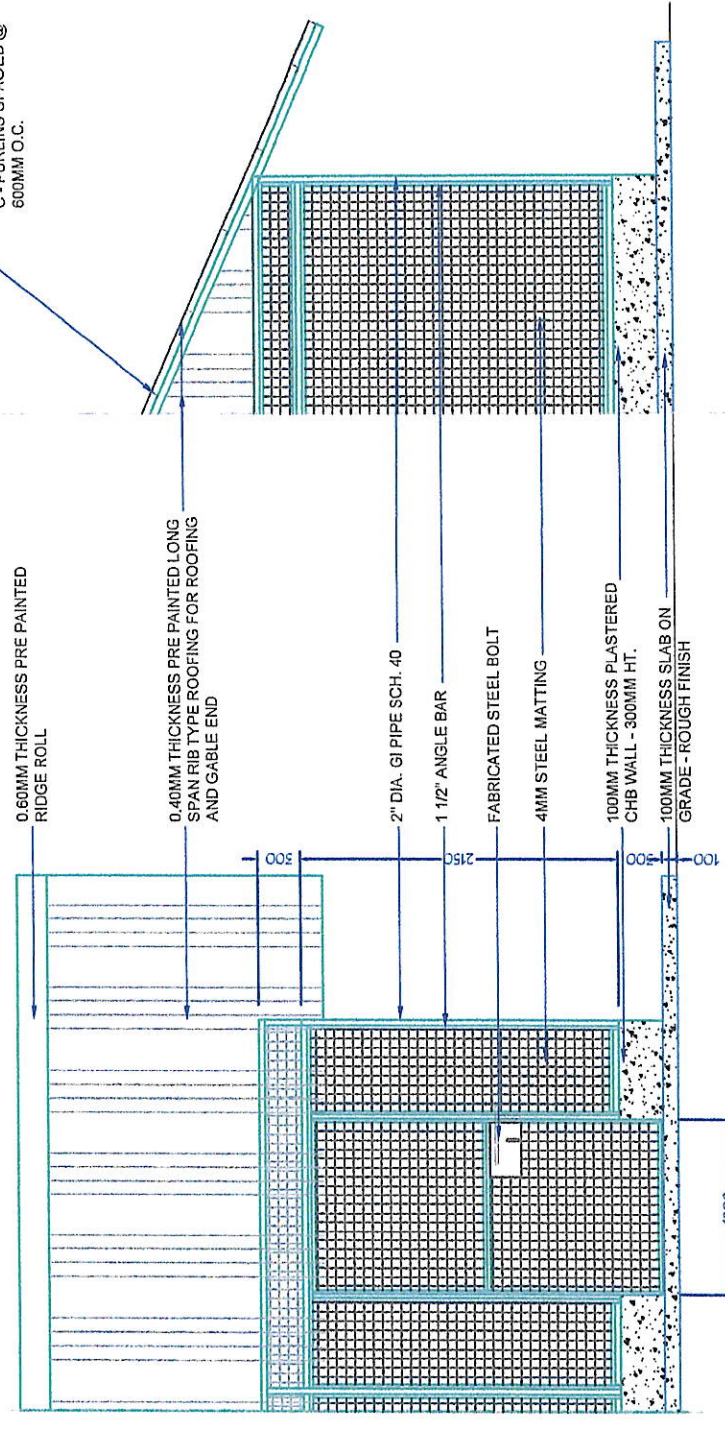
LONGITUDINAL SECTION
SCALE: 1:100



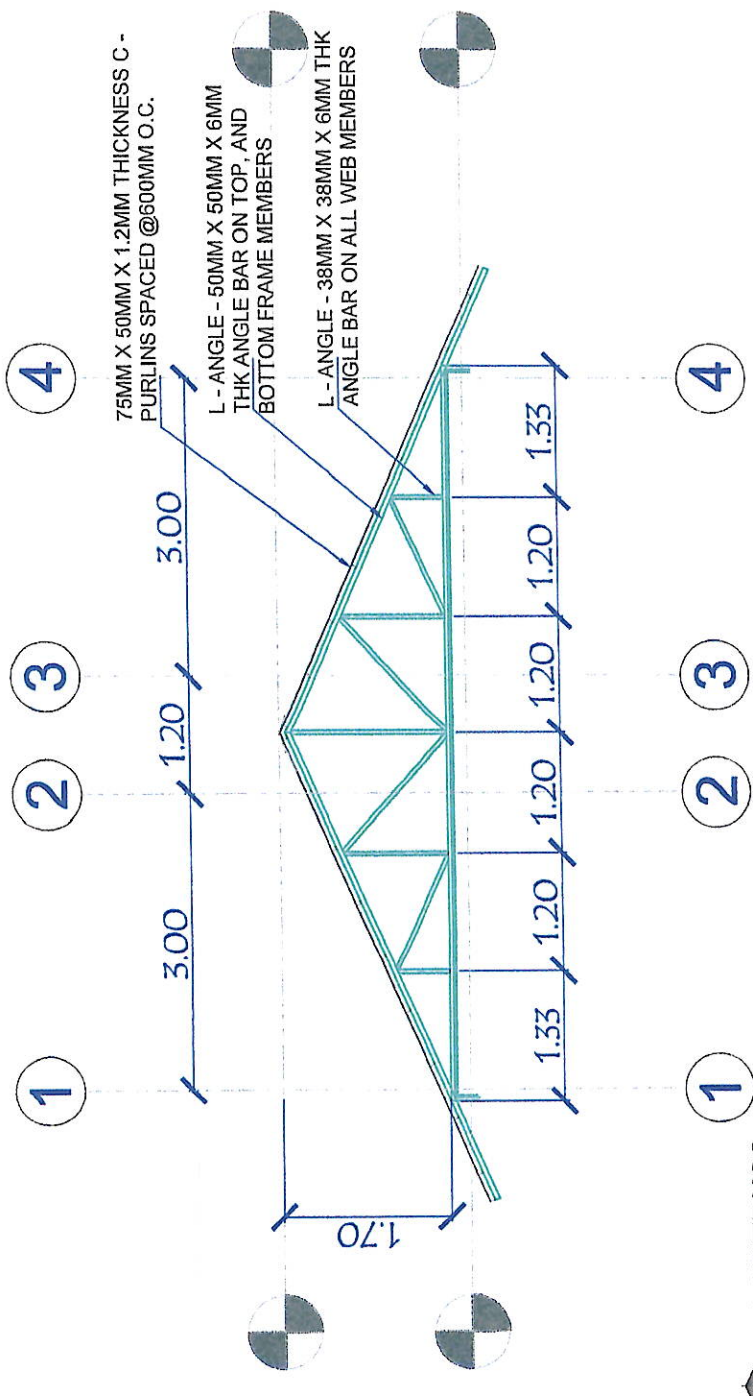
CROSS SECTION
SCALE: 1:100



COLUMN, CHB WALL AND SLAB SECTION
SCALE: 1:50

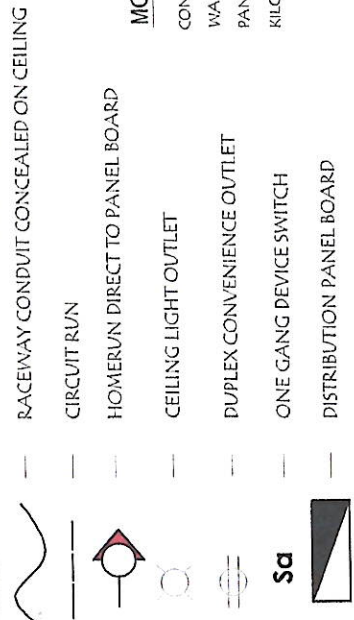


SECTION DETAILS
SCALE: 1:50



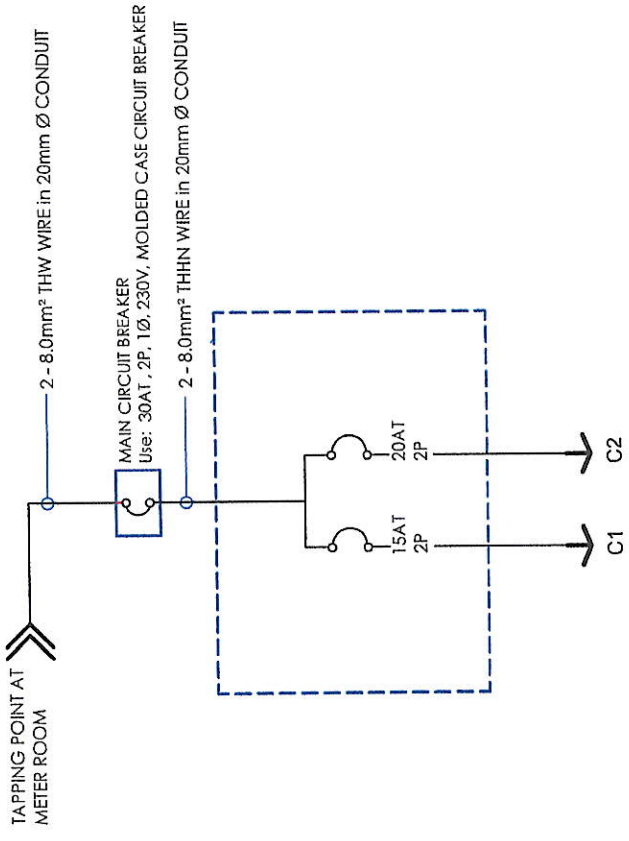
ROOF TRUSS
SCALE 1:200

SHEET NO.:	AS SHOWN		APPROVED BY:	REVIEWED BY:	CHECKED BY:	PROJECT TITLE:	SHEET NO.:	
05	AS SHOWN		 ENGR. ROGELIO A. BESANA, JR. AGM - OPERATIONS AND TECHNICAL SERVICES	 ENGR. MARIA CELIA N. DANDAN PDB - OFFICER IN CHARGE	 ENGR. DANILLO M. HORLADOR, JR. PDD - PROJECT PLANNING AND DEVELOPMENT OFFICER A	CONSTRUCTION OF MATERIALS RECOVERY FACILITY, PS NO. 16 LOCATION: PRK. UDA CRE BGY, CONEL GENERAL SANTOS CITY	GENERAL SANTOS CITY WATER DISTRICT E. FERNANDEZ STREET, BRGY. LAGAO, GEN. SANTOS CITY ENGINEERING & CONSTRUCTION DEPARTMENT PLANNING AND DESIGN DIVISION TEL. NO.: (083) 552-3824	DRAWN BY: JKD DATE: OCTOBER 7, 2022 REV. NO. 02

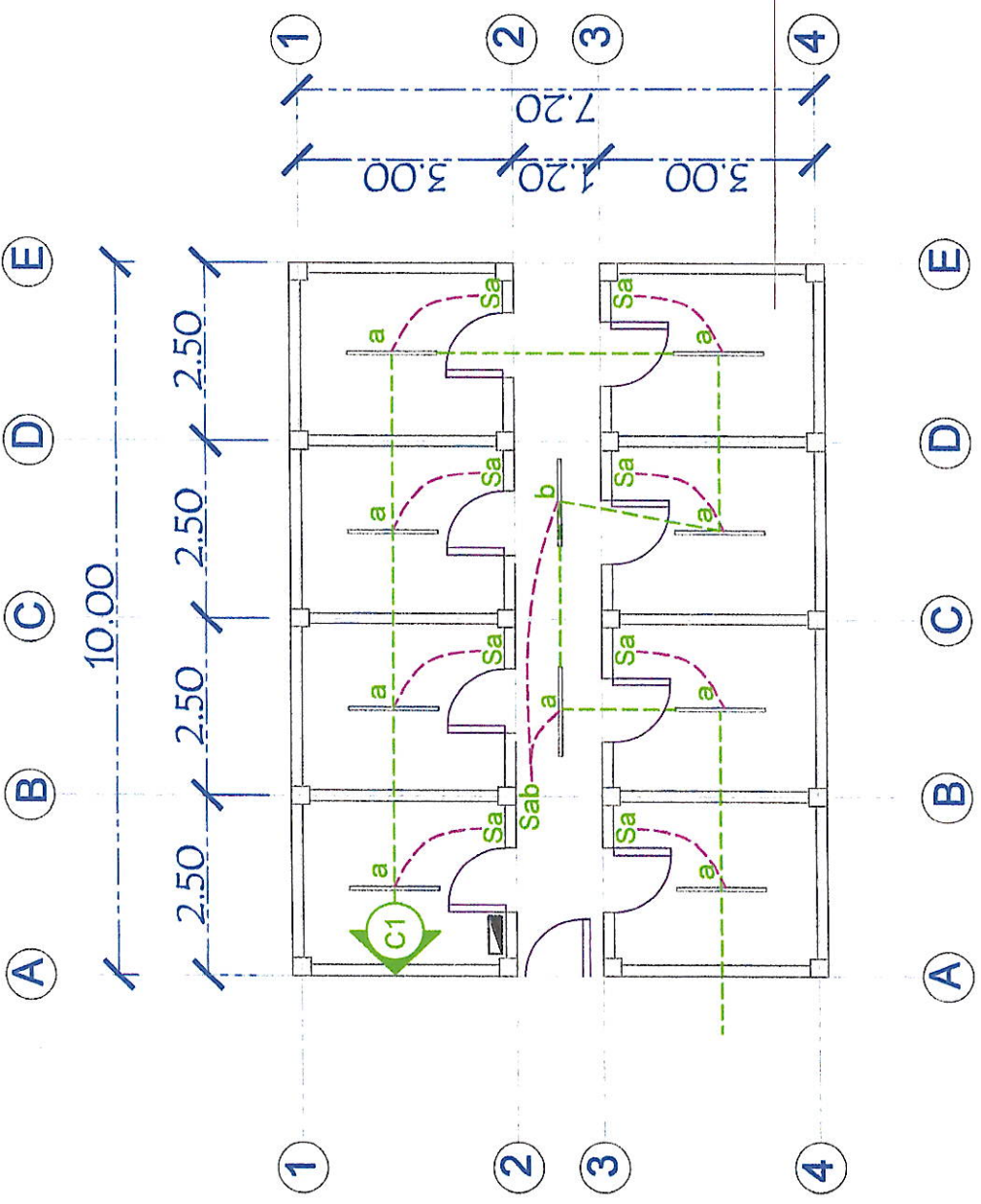


GENERAL NOTES:

- ALL ELECTRICAL WORKS SHALL BE DONE IN ACCORDANCE WITH THE PROVISION OF THE LATEST EDITION OF THE PHILIPPINE ELECTRICAL CODE, EXISTING APPLICABLE ORDINANCES, RULES AND REGULATIONS OF THE LOCAL GOVERNMENT AND WITH THE REQUIREMENTS OF THE LOCAL POWER COMPANY.
- THE TYPE OF SERVICE POWER SUPPLY TO BE USED SHALL BE SINGLE-PHASE, 2-WIRE, 230V, 60 HERTZ, A.C
- THE CONTRACTOR SHALL VERIFY AND ORIENT THE ACTUAL LOCATION OF SERVICE ENTRANCE FOR CONNECTION TO THE POWER COMPANY SERVICE POINT.
- UNLESS OTHERWISE SPECIFIED, THE MINIMUM SIZES OF WIRE AND GALVANIZED RIGID STEEL CONDUIT TO BE USED SHALL BE 3.5mm² THHN AND 15mm NOMINAL DIAMETER, RESPECTIVELY. LIKEWISE ALL ELECTRICAL WIRES SHALL BE COLOR-CODED.
- ALL LIGHTING CIRCUIT HOME RUNS AND CONVENIENCE OUTLETS SHALL BE WIRED WITH NOT LESS THAN 3.5 mm² IN SIZE.
- WHEREVER REQUIRED AND NECESSARY, PULL OR JUNCTION BOXES SHALL BE INSTALLED AT CONVENIENT AND INCONSPICUOUS LOCATION, ALTHOUGH SUCH BOXES ARE NOT SHOWN ON THE PLAN NOR MENTIONED IN THE SPECIFICATIONS.
- ALL NON-CURRENT CARRYING METAL PARTS OF ELECTRICAL EQUIPMENT SHALL BE PROPERLY GROUNDED IN ACCORDANCE WITH THE PROVISIONS OF THE LATEST EDITION OF THE PHILIPPINE ELECTRICAL CODE.
- ALL MATERIALS TO BE USED SHALL BE BRAND NEW AND OF THE APPROVED TYPE FOR LOCATION AND PURPOSE.
- ALL WALL OUTLETS SHALL BE INSTALLED AT THE FOLLOWING HEIGHTS ABOVE THE FINISHED FLOOR LEVEL, UNLESS NOTED IN THE PLAN.
 - a) WALL SWITCHES @ 1300mm
 - b) WALL CONVENIENCE OUTLETS @ 300 mm
- ALL ELECTRICAL WORKS SHALL BE DONE UNDER THE DIRECT AND IMMEDIATE SUPERVISION OF A DULY REGISTERED ELECTRICAL ENGINEER.



POWER SYSTEM SINGLE LINE DIAGRAM
SCALE: NOT TO SCALE



SCHEDULE OF LOADS:

CIRCUIT No.	PARTICULARS	NO. OF OUTLET	WATTS	PHASE	VOLTS	AMPERE	CB RATING	WIRE SIZE AND CONDUIT
1	LIGHT OUTLET	10	1000	1	230	5.22	15 AT	2-3.5mm ² THWN, 1-2.0mm ² TW(GND.) IN 20mmØ CONDUIT
2	SPARE	1	1080	1	230	4.70	20 AT	2-3.5mm ² THWN, 1-2.0mm ² TW(GND.) IN 20mmØ CONDUIT
TOTAL			2,080					
COMPUTATION:		KVA = 17.25 x 230 / 1000						
Demand load = 2,080 / 230 x 0.8DF = 7.23 A		KVA = 1.66						

SCHEDULE OF LOADS
SCALE: NOT TO SCALE

GENERAL SANTOS CITY WATER DISTRICT
E. FERNANDEZ STREET, BRGY. LAGAO, GEN. SANTOS CITY
ENGINEERING & CONSTRUCTION DEPARTMENT
PLANNING AND DESIGN DIVISION
TEL. NO.: (083) 552-3824

CONSTRUCTION OF MATERIALS RECOVERY FACILITY, PS NO. 16

LOCATION: PRK. UDA GREGGY, CONEL GENERAL SANTOS CITY

CHECKED BY:

REVIEWED BY:

APPROVED BY:

PROJECT TITLE: CONSTRUCTION OF MATERIALS RECOVERY FACILITY, PS NO. 16

PROJECT NO.: 06

DATE: OCTOBER 7, 2022

REV. NO. 02

DRAWN BY: JKD

AGM - OPERATIONS AND TECHNICAL SERVICES