

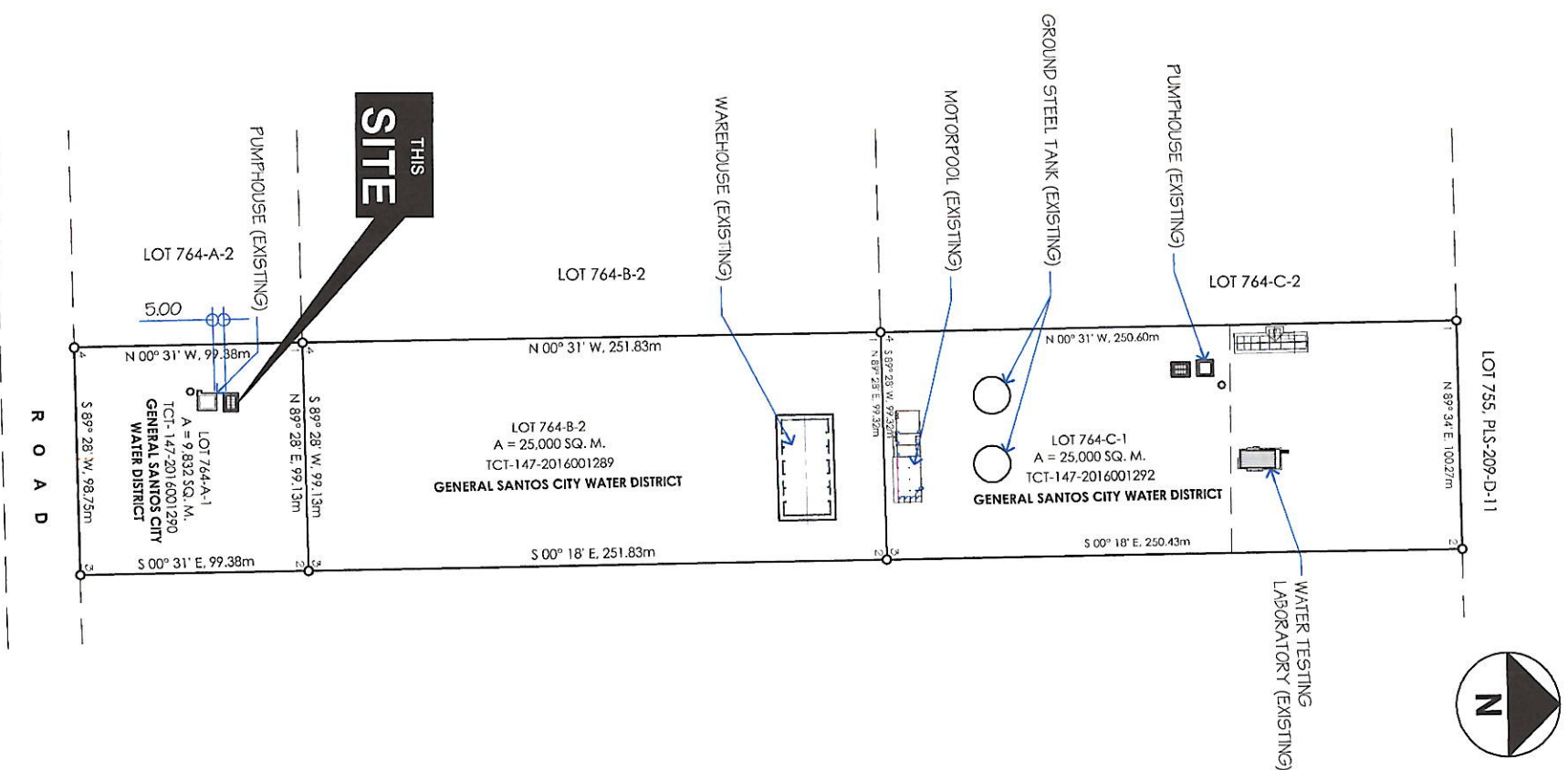
OFFICE OF THE BUILDING OFFICIAL



01 PERSPECTIVE
B-01 NOT TO SCALE



02 VICINITY MAP
B-01 NOT TO SCALE



03 SITE DEVELOPMENT PLAN
B-01 NOT TO SCALE

PROJECT AND LOCATION:
PROPOSED CONSTRUCTION OF GENSET SHED @ P5 NO.19
LOCATION: LOT 764-A-1 NUPOL CONEL, GEN. SANTOS CITY

PREPARED BY:
REV. R. ANORA
SENIOR DRAFTSMAN

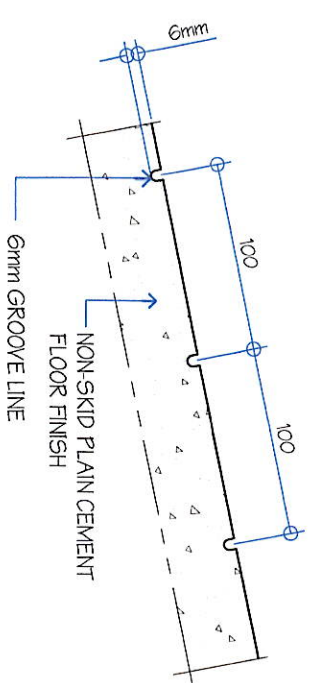
CHECKED BY:
ENGR. DANIEL M. HORLADOR, JR.
PROJECT PLANNING & DEVELOPMENT OFFICER A

REVIEWED BY:
ENGR. MARIA CELIA N. DANDAN
DC - FDD

RECOMMEND APPROVAL:
ENGR. ROGELIO A. BESANA, JR.
AGY. CHIEF OF TECHNICAL SERVICES

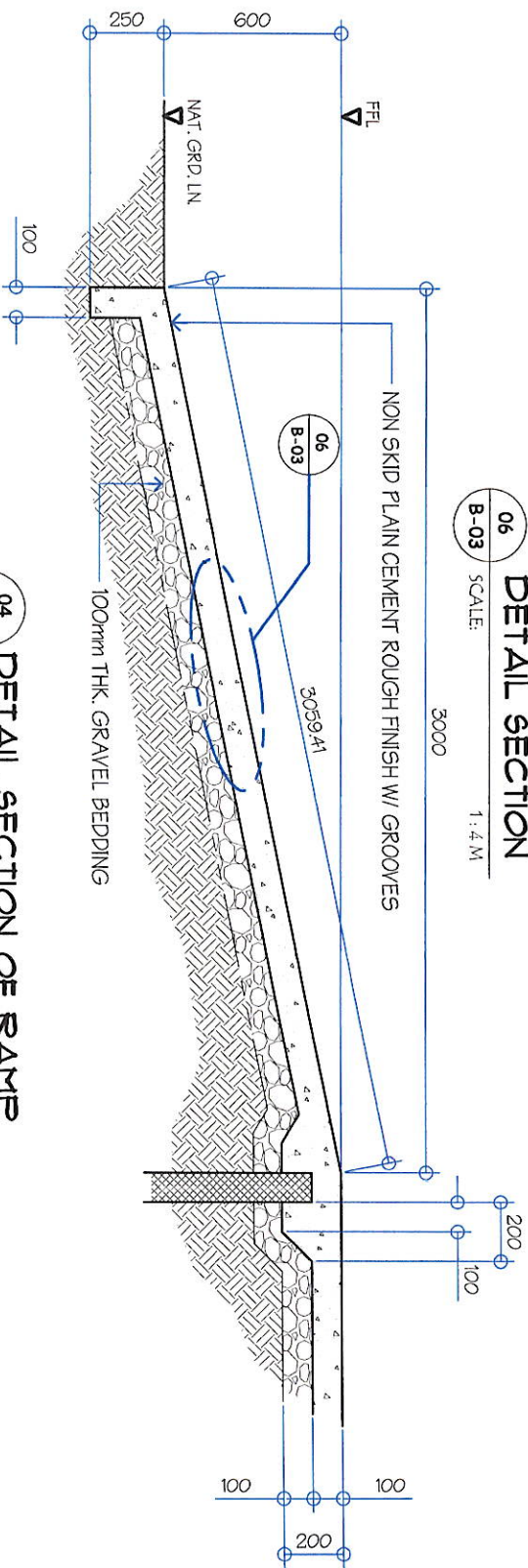
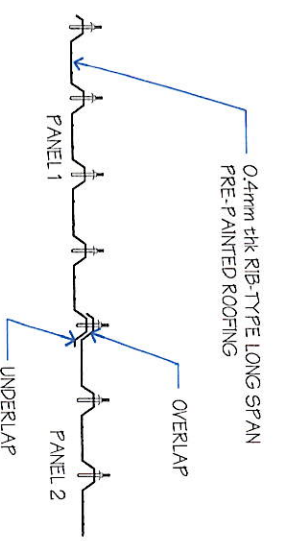
APPROVED BY:
ENGR. ARN B. GELLANGARAN
GENERAL MANAGER A

| | |
|-------------------|----------------|
| SHEET CONTENTS | SHEET NO. |
| ELECTRONICS | B-01 |
| MECHANICAL | 06 |
| SANITARY | |
| STRUCTURAL | |
| ARCHITECTURAL | |
| LINE AND GRADE | |
| LAND USE & ZONING | |
| As shown | |
| DAWN BY: DONGKAE | REV. NO. |
| CHECKED BY: | DATE: JAN 2022 |

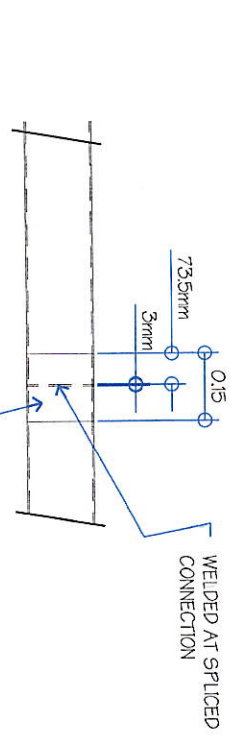


06
B-03
SCALE: 1:4 M

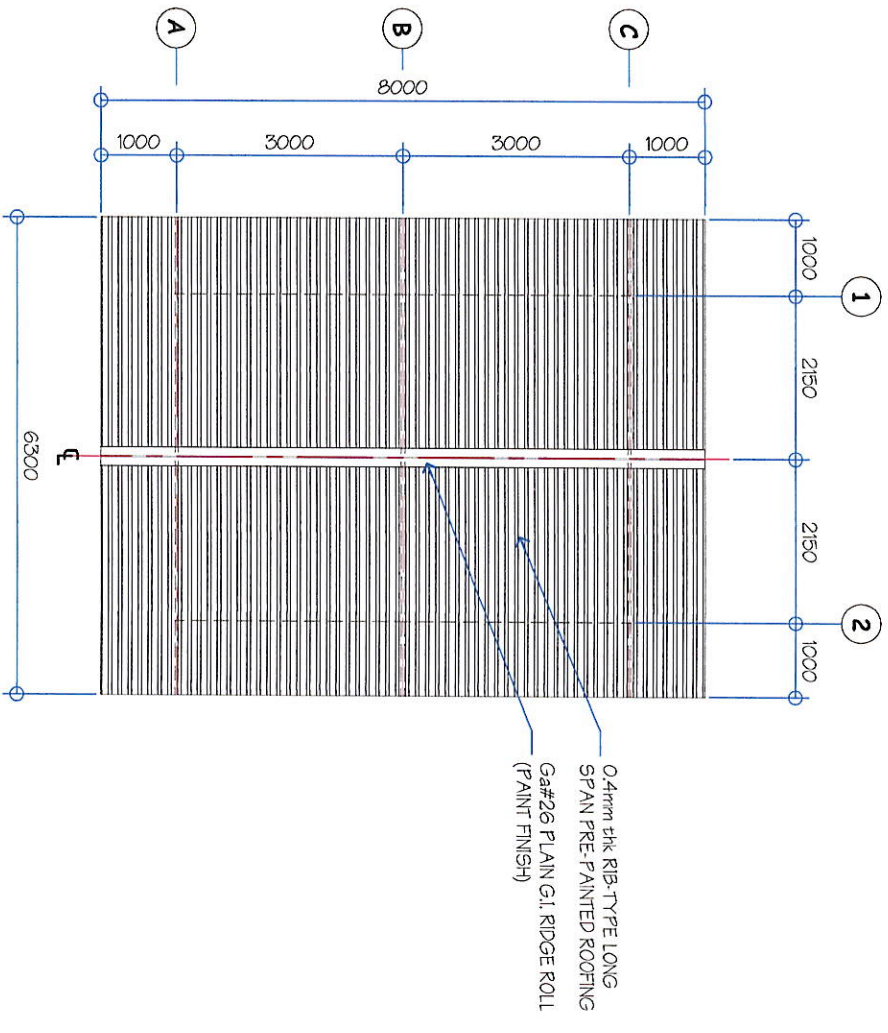
07
B-03
NOT TO SCALE



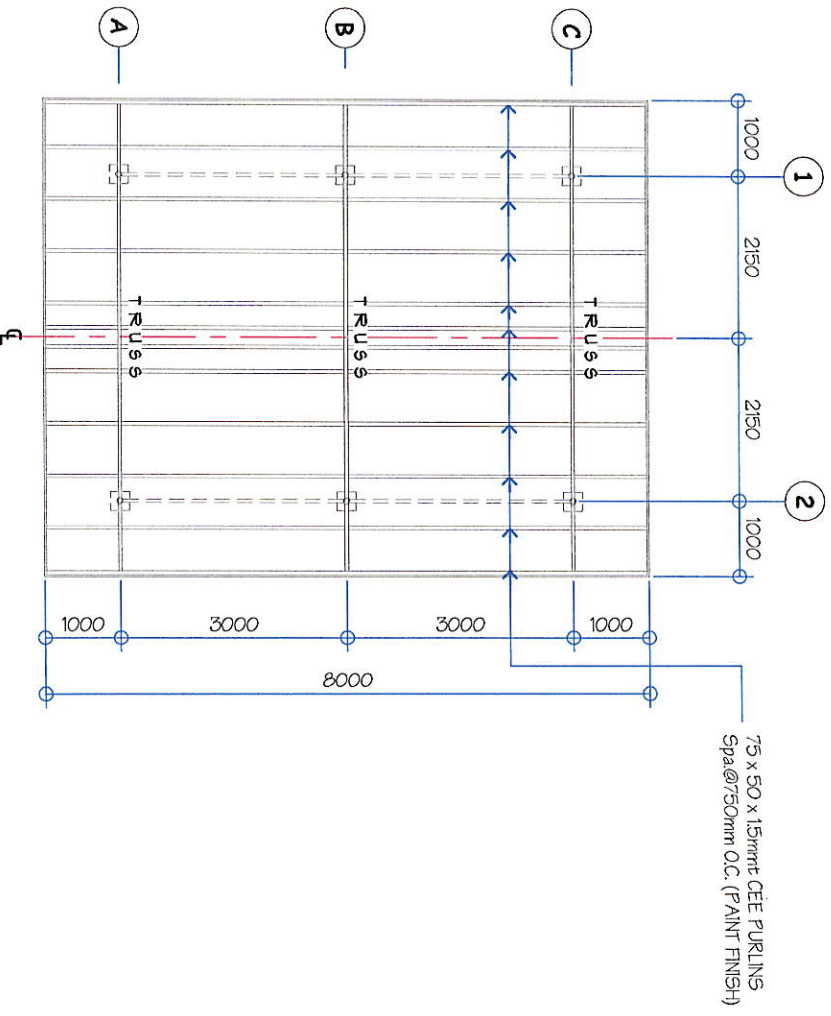
04
B-03
SCALE: 1:25 M



05
B-03
NOT TO SCALE

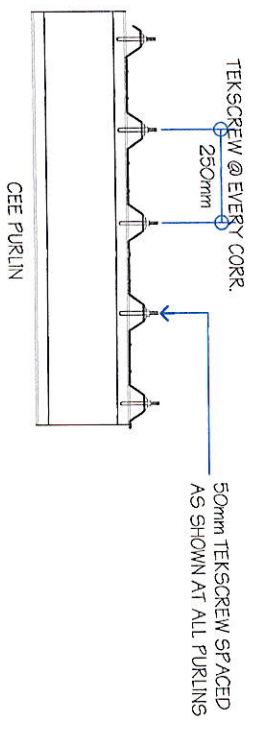


01
B-03
SCALE: 1:100 M



02
B-03
SCALE: 1:100 M

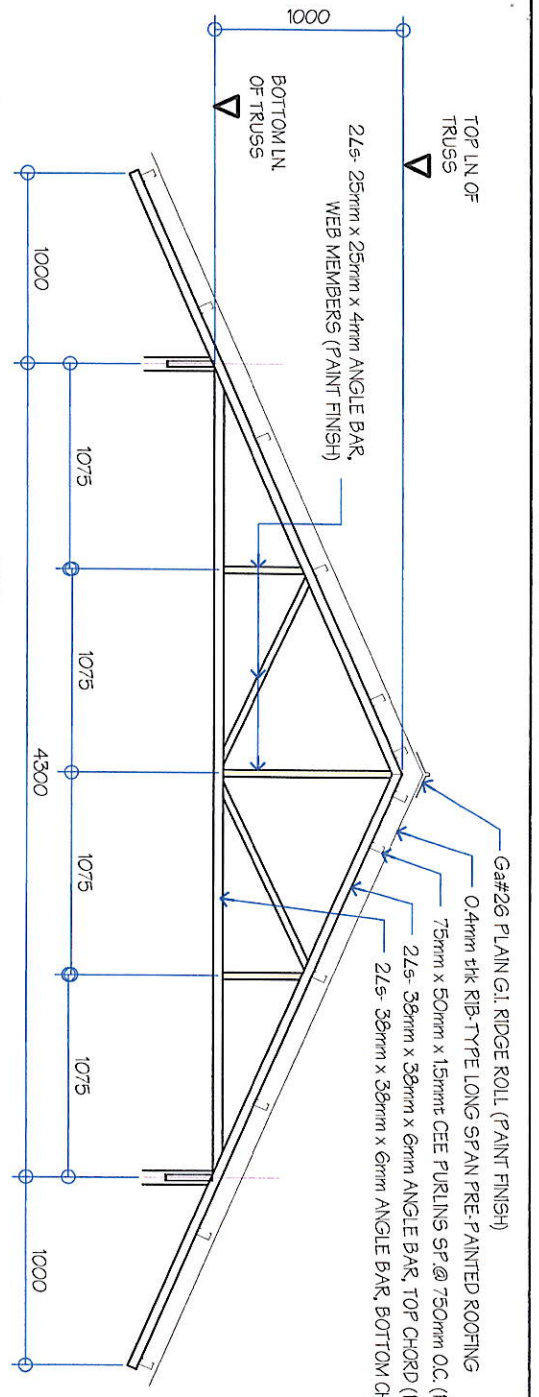
03
B-03
NOT TO SCALE



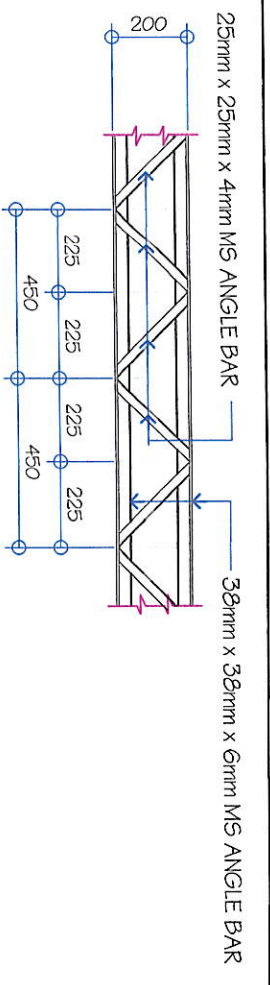
0.4mm thk. RIB-TYPE LONG SPAN PRE-PAINTED ROOFING (PAINT FINISH)
Ga#26 PLAIN G.I. RIDGE ROLL (PAINT FINISH)

75 x 50 x 15mm CEE PURLINS
Spa@750mm O.C. (PAINT FINISH)

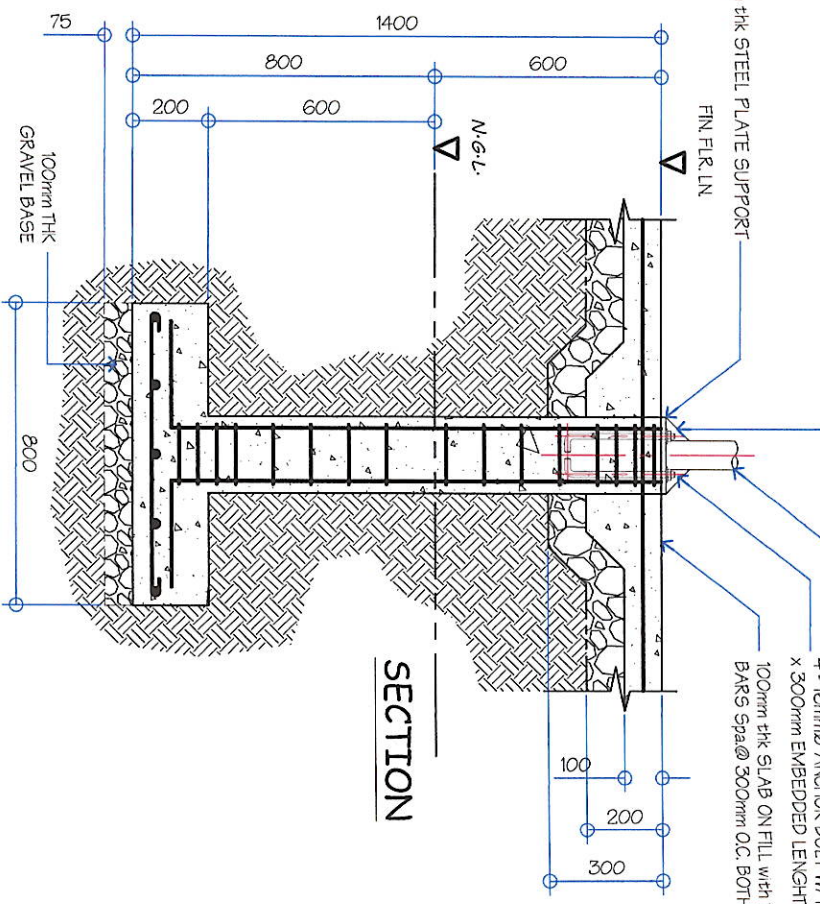
| | | | | | | | | | | | | | | | | | |
|--|--|--|--|---|--|--|--|--|--|--|--|---|--|---|--|----------------------------------|--|
| <p>GSC WATER DISTRICT E. FERNANDEZ STREET, BRGY. LAGAO, GEN. SANTOS CITY ENGINEERING & CONSTRUCTION DEPARTMENT PLANNING AND DESIGN DIVISION TEL. NO. : (083) 552 - 3824</p> | | <p>PROJECT AND LOCATION PROPOSED CONSTRUCTION OF GENSET SHED @ P5 NO.19</p> | | <p>PREPARED: REV. R. ANORA SENIOR DESIGNER</p> | | <p>CHECKED: ENGR. DANILLO H. HOBLADOR, JR. PROJECT PLANNING & DEVELOPMENT OFFICER A</p> | | <p>REVIEWED: ENGR. MARIA CELIA N. DANDAN OC - FDD</p> | | <p>RECOMMEND APPROVAL: ENGR. ROGELIO A. BESANA, JR. AGM, OPERATION & TECHNICAL SERVICES</p> | | <p>APPROVED: ENGR. ARN B. GELLANGAEN GENERAL MANAGER A</p> | | <p>SHEET CONTENTS AS SHOWN</p> | | <p>SHEET NO. B-03</p> | |
| <p>LOCATION: LOT 744-A-1 NUPOL, CONEL, GEN. SANTOS CITY</p> | | <p>REVISIONS:</p> | | <p>DATE: JUN 2023</p> | | <p>CHECKED BY:</p> | | <p>DATE: JUN 2023</p> | | <p>REVISIONS:</p> | | <p>DATE: JUN 2023</p> | | <p>REVISIONS:</p> | | | |



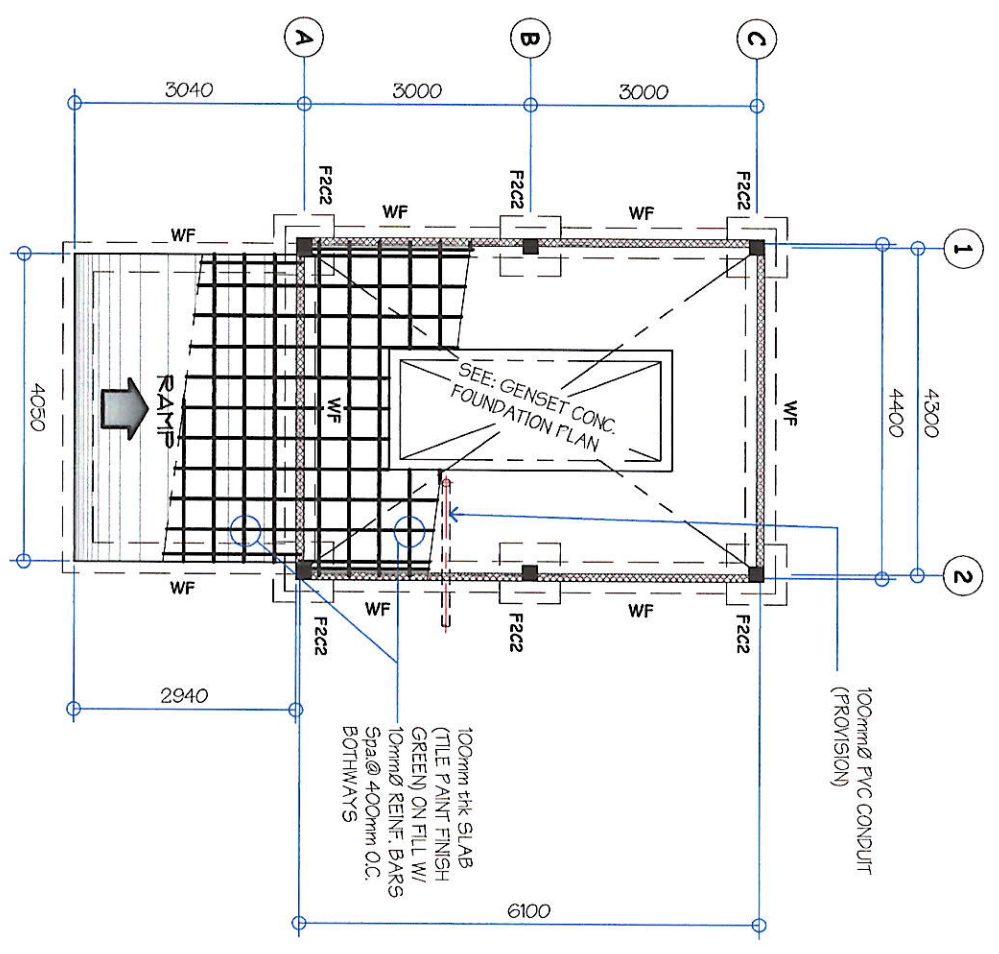
04 TRUSS DETAIL
SCALE: 1 : 40 M



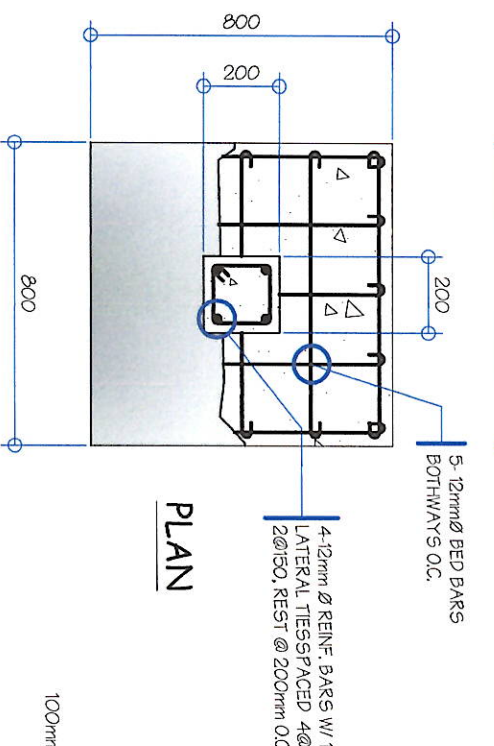
05 BUILT-UP GIRT DETAIL
SCALE: 1 : 40 M



SECTION

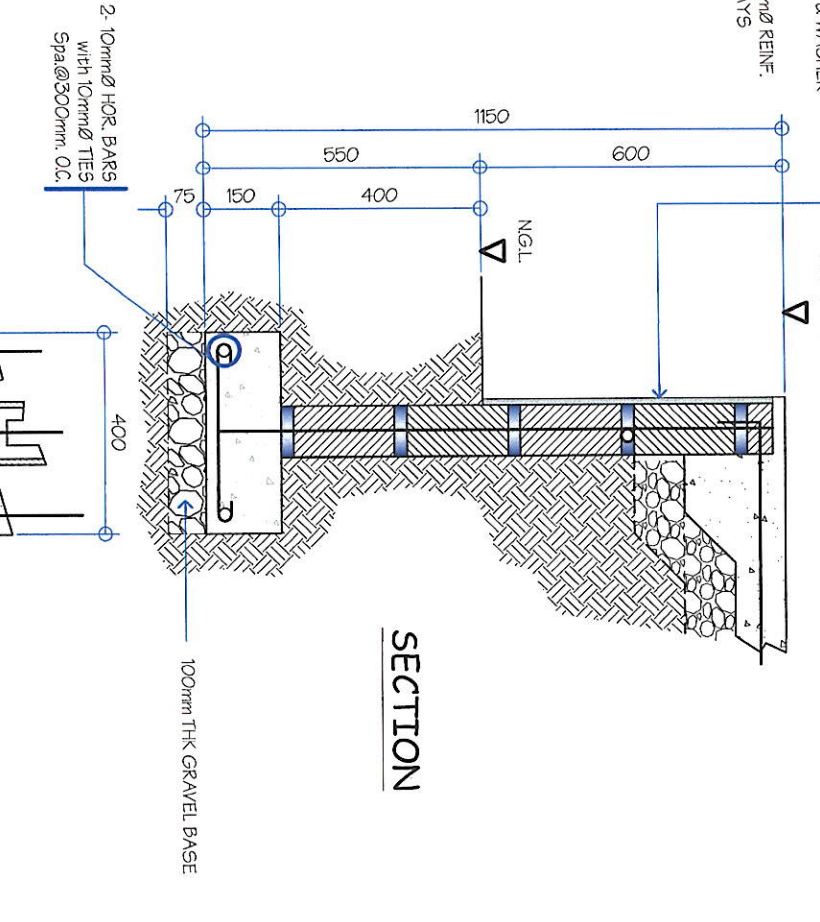


01 FOUNDATION PLAN
SCALE: 1 : 100 M

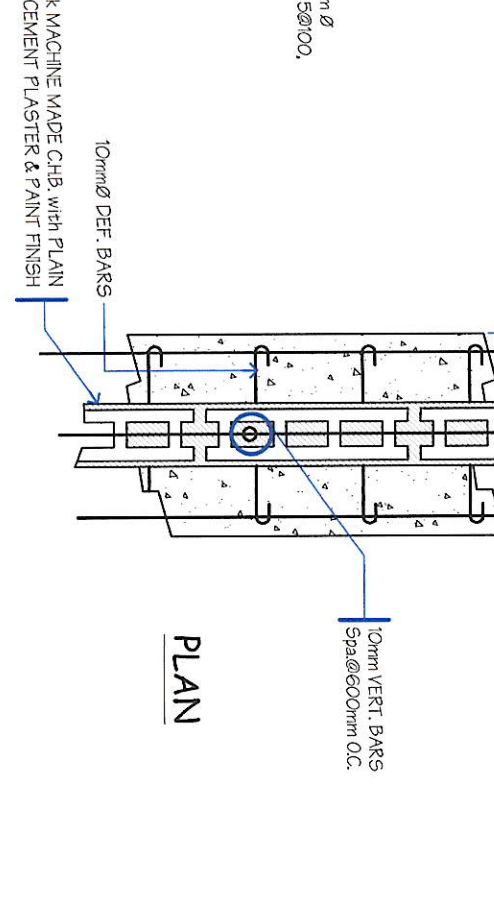


PLAN

02 F2C2 DETAIL
SCALE: 1 : 20 M



SECTION

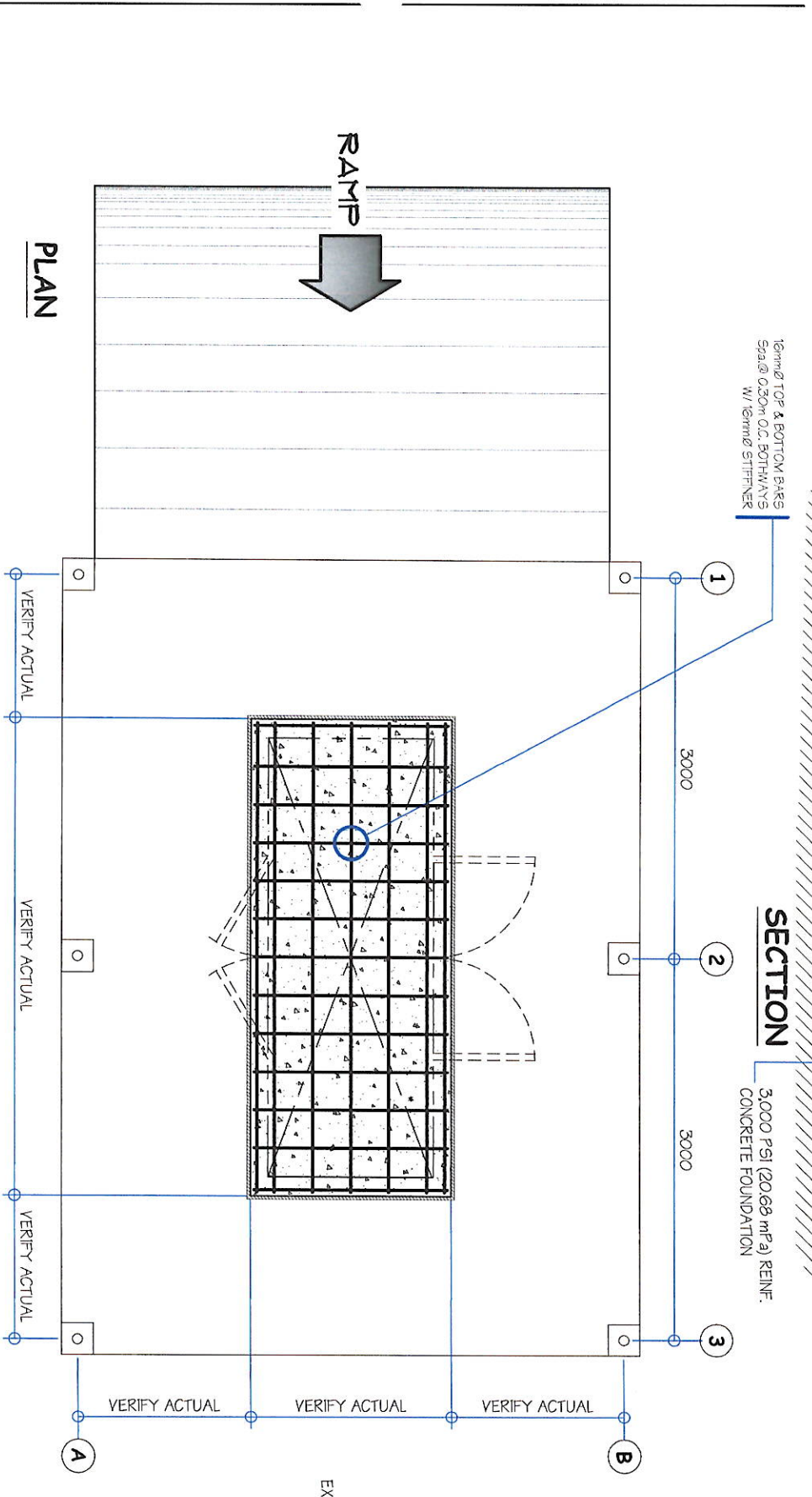
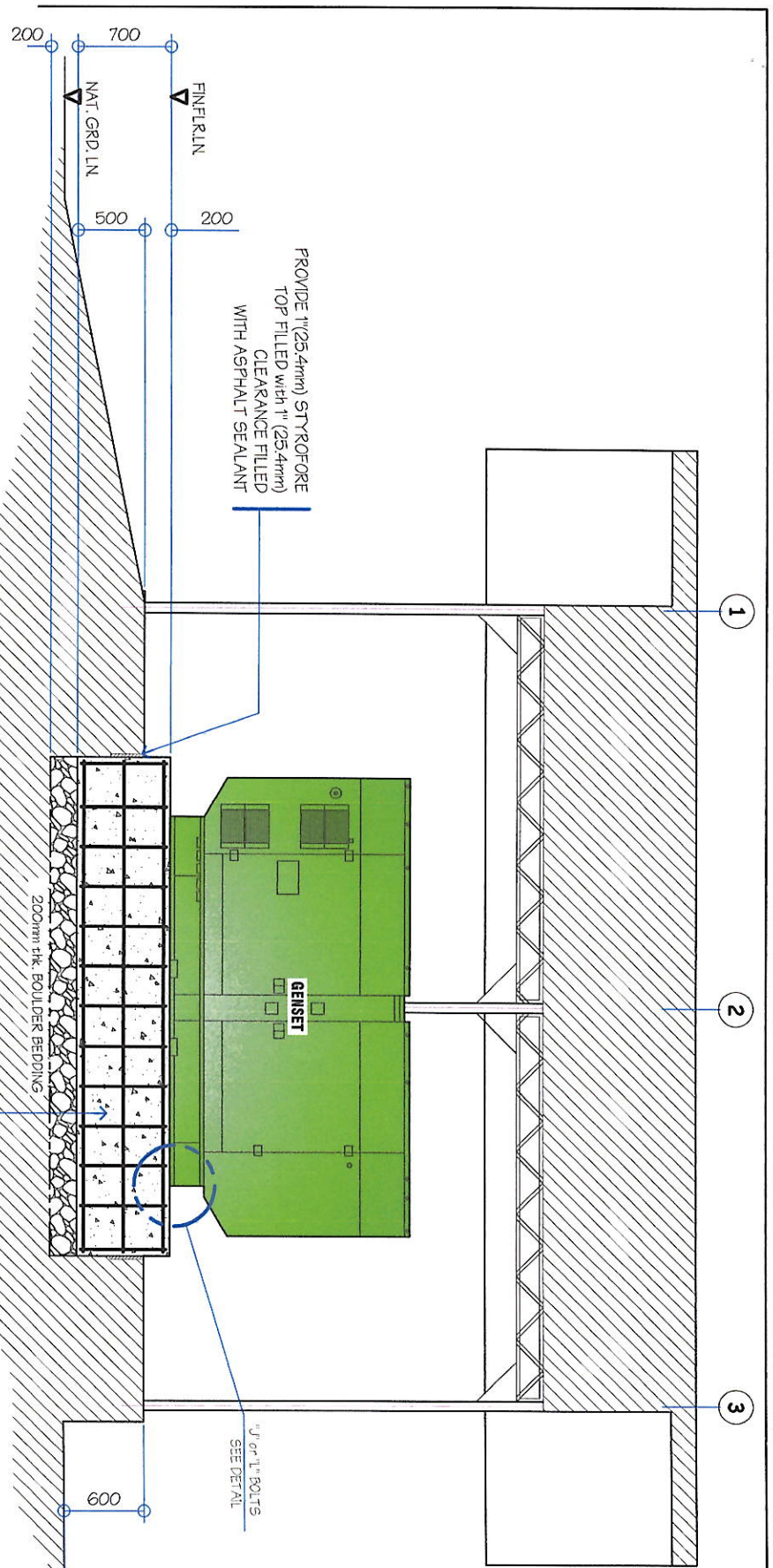


PLAN

03 WF DETAIL
SCALE: 1 : 5 M

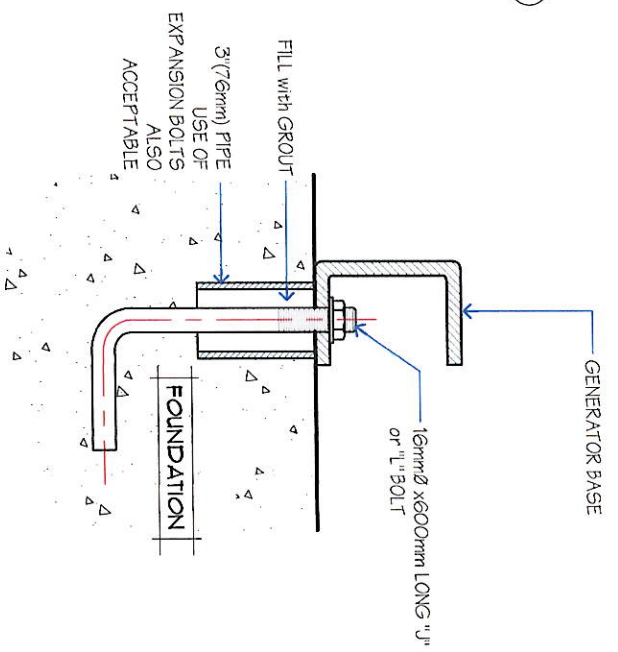
| | | | |
|---|--|---|--|
|  <p>GENERAL SANTOS CITY WATER DISTRICT E. FERNANDEZ STREET, BRGY. LAGAO, GEN. SANTOS CITY ENGINEERING & CONSTRUCTION DEPARTMENT PLANNING AND DESIGN DIVISION TEL. NO. : (083) 592 - 3824</p> | | <p>PROJECT AND LOCATION</p> <p>PROPOSED CONSTRUCTION OF GENSET SHED @ P6 NO.19</p> <p>LOCATION: LOT 744-A-1 NUPOL CONEL, GEN. SANTOS CITY</p> | |
| <p>PREPARED:</p> <p>REY R. ANORA SENIOR DRAFTSMAN</p> | | <p>CHECKED:</p> <p>ENGR. DANLO H. HORLADOR, JR. PROJECT PLANNING & DEVELOPMENT OFFICER A</p> | |
| <p>REVIEWED:</p> <p>ENGR. MARIA CELIA N. DANDAN CC - PDD</p> | | <p>RECOMMEND APPROVAL:</p> <p>ENGR. ROGELIO A. BESANA, JR. AGY. OPERATIONS & TECHNICAL SERVICES</p> | |
| <p>APPROVED:</p> <p>ENGR. ARN B. GELLANGARIN GENERAL MANAGER A</p> | | <p>SHEET CONTENTS</p> <p>AS SHOWN</p> | |
| <p>DRAWN BY: DONG-EAE</p> <p>REV. NO.:</p> <p>DATE: JAN. 2023</p> | | <p>SHEET NO.</p> <p>S-01</p> | |
| <p>04</p> | | <p>06</p> | |

ONE(1) SET BRAND NEW SILENT TYPE GENERATOR STAND BY POWERED GENERATING SET COMPLETE WITH ACCESSORIES



01 TYPICAL VIBRATION ISOLATING FOUNDATION
SCALE: 1:50 M

- The foundation should extend at least 6 inches (150 mm) beyond the skid on all sides. This determines the length (l) and width (w) of the foundation.
- The foundation should extend at least 6 inches (150 mm) above the floor to make service and maintenance of the generator set easier.
- The foundation should be reinforced concrete with a 28-day compressive strength of at least 3000 psi (20.68 MPa).



02 DETAIL OF "J" OR "L" BOLT ANCHORING
SCALE: NTS

- ENGINE**
 - Configuration : 4 cycle, in-line 6 cylinder diesel
 - Aspiration : Turbo charged and after cooled
 - Rated Speed, rpm : 1800
 - Speed droop : 5%
 - Over-speed limit, rpm : 2200±50
- ALTERNATOR**
 - Frequency and Spd : 60Hz/1800rpm
 - Insulation System : Class H/4 POLES
 - Rated Power Factor : 0.8
 - Voltage Regulation : ±5%
 - Full Load Current : >313 Amperes @460V
 - Excitation : SELF EXCITATION
 - Stator Winding : 21/3
 - Exciter Voltage Regulator : Permanent Magnet Generator (PMG)
- FUEL CONSUMPTION**
 - 100% Load : 50 1/hr
 - 75% Load : 39 1/hr
 - 50% Load : 26 1/hr
 - 25% Load : 15 1/hr
- ELECTRICAL SYSTEM**
 - Voltage : 460-480V
 - Power Factor : 0.8
 - Phase : 3
 - Frequency : 60Hz
- SOUNDPROOF ENCLOSURE**
 - It should be Factory Assembled Soundproof Enclosure with 90db.
- GENERATING SET CONTROL MODULE FEATURES**
 - Control System comprised of:
 - Protection and control of a diesel engine.
 - Three phase AC voltage measuring system.
 - Equipped with an LCD display presenting all values and alarms.
 - Automatic engine start/stop.
 - Engine protection.
 - Breaker control.
 - Generator protection.
 - Digital governing and generator set protective functions.
 - Single phase full wave SCR type regulator compatible with either shunt or PMG systems.
- STANDARD FUNCTION**
 - Engine Control
 - Generator Monitoring
 - Generator Protection
 - Engine Monitoring
 - Clear Text Display
- SHUTDOWN FUNCTION**
 - Loss of Speed Signal
 - Alternator Under/Over Voltage
 - Alternator Under/Over Frequency
 - Mains Under/Over Voltage
 - Mains Under/Over Frequency
 - Under/Over Speed
 - Low Oil Pressure
 - High Engine Temperature
 - Phase Sequence Electrical (Option)
 - Earth Fault (Option)
- WARNING FUNCTION**
 - Alternator Under/Over Voltage
 - Alternator Under/Over Frequency
 - Mains Under/Over Voltage
 - Mains Under/Over Frequency
 - Under/Over Speed
 - Low Oil Pressure Pre-Alarm
 - High Engine Temperature Pre-Alarm
 - High/Low Battery Voltage
 - Over-current
 - Periodic Maintenance
- GENERATING SET DIMENSION**
 - L = 3.30M W = 1.07m H = 1.60m

AS SHOWN

| | | | | | | | | | |
|--|--|--|---|---|--|---|---|---|----------------------------------|
| <p>GSC WATER DISTRICT E. FERNANDEZ STREET, BRGY. LAGAO, GEN. SANTOS CITY ENGINEERING & CONSTRUCTION DEPARTMENT PLANNING AND DESIGN DIVISION TEL. NO. : (083) 552-3824</p> | | <p>PROJECT AND LOCATION PROPOSED CONSTRUCTION OF GENSET SHED @ Ps NO.19</p> | <p>PREPARED: REY R. ANORA SENIOR PLANNING</p> | <p>CHECKED: ENGR. DANLO M. HORLADOR, JR. PROJECT PLANNING & DEVELOPMENT OFFICER A</p> | <p>REVIEWED: ENGR. MARIA CELIA N. DANDAN OIC - PSD</p> | <p>RECOMMEND APPROVAL: ENGR. ROGELIO A. BESANA, JR. AGY. OF PLANNING & TECHNICAL SERVICES</p> | <p>APPROVED: ENGR. ARN B. GELLANGARAN GENERAL MANAGER A</p> | <p>SHEET CONTENTS AS SHOWN</p> | <p>SHEET NO. M-01</p> |
| <p>LOCATION : LOT 744-A-1 NUPOL CONEL. GEN. SANTOS CITY</p> | | <p>PROJECT AND LOCATION PROPOSED CONSTRUCTION OF GENSET SHED @ Ps NO.19</p> | <p>PREPARED: REY R. ANORA SENIOR PLANNING</p> | <p>CHECKED: ENGR. DANLO M. HORLADOR, JR. PROJECT PLANNING & DEVELOPMENT OFFICER A</p> | <p>REVIEWED: ENGR. MARIA CELIA N. DANDAN OIC - PSD</p> | <p>RECOMMEND APPROVAL: ENGR. ROGELIO A. BESANA, JR. AGY. OF PLANNING & TECHNICAL SERVICES</p> | <p>APPROVED: ENGR. ARN B. GELLANGARAN GENERAL MANAGER A</p> | <p>SHEET CONTENTS AS SHOWN</p> | <p>SHEET NO. M-01</p> |
| <p>DATE: JUN 2023</p> | | <p>PROJECT AND LOCATION PROPOSED CONSTRUCTION OF GENSET SHED @ Ps NO.19</p> | <p>PREPARED: REY R. ANORA SENIOR PLANNING</p> | <p>CHECKED: ENGR. DANLO M. HORLADOR, JR. PROJECT PLANNING & DEVELOPMENT OFFICER A</p> | <p>REVIEWED: ENGR. MARIA CELIA N. DANDAN OIC - PSD</p> | <p>RECOMMEND APPROVAL: ENGR. ROGELIO A. BESANA, JR. AGY. OF PLANNING & TECHNICAL SERVICES</p> | <p>APPROVED: ENGR. ARN B. GELLANGARAN GENERAL MANAGER A</p> | <p>SHEET CONTENTS AS SHOWN</p> | <p>SHEET NO. M-01</p> |
| <p>DATE: JUN 2023</p> | | <p>PROJECT AND LOCATION PROPOSED CONSTRUCTION OF GENSET SHED @ Ps NO.19</p> | <p>PREPARED: REY R. ANORA SENIOR PLANNING</p> | <p>CHECKED: ENGR. DANLO M. HORLADOR, JR. PROJECT PLANNING & DEVELOPMENT OFFICER A</p> | <p>REVIEWED: ENGR. MARIA CELIA N. DANDAN OIC - PSD</p> | <p>RECOMMEND APPROVAL: ENGR. ROGELIO A. BESANA, JR. AGY. OF PLANNING & TECHNICAL SERVICES</p> | <p>APPROVED: ENGR. ARN B. GELLANGARAN GENERAL MANAGER A</p> | <p>SHEET CONTENTS AS SHOWN</p> | <p>SHEET NO. M-01</p> |

